

May 2026

The Ipplepen Magazine



News and events around the Parish

Peter Tomkinson
Electrical Contractor

EV charging points - Inspection and testing - PAT
From an additional socket to a rewire



01803 812444 or 07779 249486

mail@petertomkinson.co.uk



CONSERVATORIES KITCHENS
WINDOWS BATHROOMS
DOORS GARAGE DOORS
PORCHES HOME IMPROVEMENTS

over 25 years experience installing... PVC-U ALUMINIUM HARDWOOD

Please call for a FREE no obligation quotation...

M: 07855 355853 T: 01626 201911

Moor to Shore Dog Walking Services

Ipplepen based dog walker, also covering Abbotskerswell, Ogwell and Denbury, for group walks.

Contact Kim on 07762 912 772



R C N
T R E E W O R K S



T R E E S U R G E R Y

FOR ALL YOUR TREE SURGERY NEEDS

TEL: 07496690271

EMAIL: RCNTREEWORKS@GMAIL.COM

The Ipplepen Magazine

Editor:

Trevor Ashford
6 Caunters Close, Ipplepen
trevorashford321@gmail.com

Adverts/Treasurer:

Kathy Langabeer
kathylangabeer@gmail.com
To advertise in *The Ipplepen Magazine* please call 07925 115709

Distribution:

Barbara Hawksby-Calland
b.ipplepen@btinternet.com

The magazine is also
available online.

www.ipplepenmagazine.com

**Copy deadline for
next month's issue
15th May, 2026**

The Ipplepen Magazine is produced each month and 1,350 copies are distributed free of charge to every household and business in the Parish.

Clerk to Ipplepen Parish Council	813250
Ipp Church Hall	p.emmerson@live.co.uk
Ipplepen Village Hall (booking)	813906
Teignbridge District Council	01626 361101
Devon County Council	0845 155 1015
Devon County Council (Roads and Transport)	0845 155 1004
Ipplepen Health Centre	874450
Ipplepen Primary School	812226
Saplings (Pre-school and before/after school clubs)	812466
Newton Abbot Hospital	01626 324500
Torbay Hospital (Switchboard/ general enquiries)	614567
NHS Direct (24 hours)	111
Police – non-urgent calls (24 hrs)	101
Electricity (24 hour emergency service)	0800 365 900
Gas (24 hour emergency service)	0800 111 999
Water (24 hour service)	0800 230 0561
Martin.Wrigley.MP@Parliament.uk	
Ipplepen Hub	01803 814100

To The Manager, Ipplepen Co-op, All Staff and Customers

A huge apology for the commotion caused in the Co-op on Thursday morning 19th February 2026 when I experienced a seizure requiring urgent medical attention and when the store had to be closed to customers whilst awaiting emergency services. Please accept my sincere apologies for the inconvenience caused. Many thanks for your kindness and assistance.

Thank you to friends, neighbours and villagers who have sent cards, flowers and get well wishes. Everyone has been so kind.

I wish Ipplepen Co-op continued success.

Mandy Marks



IPPLEPEN VILLAGE SHOW/IPPLE TIPPLE

SATURDAY 18th JULY 2026

Maypole practise for the show begins on Monday 18th May at Ipplepen Primary School field 6 -7pm for any child in years 4 , 5 or 6 who attends Ipplepen primary school and for any child in those year groups who resides in the parish of Ipplepen or Torbyran but may attend another primary school. Please take part to keep this village show tradition going.

Invitation letters are sent out via the school to children attending Ipplepen Primary School in years 4, 5 and 6. For further information please contact Sheila Needs Tel No 07762665790 or please come along on the first evening to register.

The Maypole ladies look forward to seeing you !

Front page picture taken with a Canon EOS DSLR, 75 mm lens, HDR, Pro lighting and soft focus.

(For those who worry about these things)

IPPLEPEN VILLAGE CINEMA

WE NEED YOUR HELP

Our longest serving member, Antony Mitchell, is sadly leaving us. He has been a very important of our team for many years, setting up the equipment and driving the DVD. We will miss him greatly.

We are hoping to find someone who would like to help us out, ensuring the continuation of our wonderful film society Please contact me on 07979 598558 to talk through what is needed. Just one evening a month is required to help this great village tradition.

Thanks in anticipation, Helen Ballard

IPPLEPEN MEMORY CAFE



19th May 2026

St Andrews Church Hall

2pm until 3.30pm

Theme Musical Afternoon

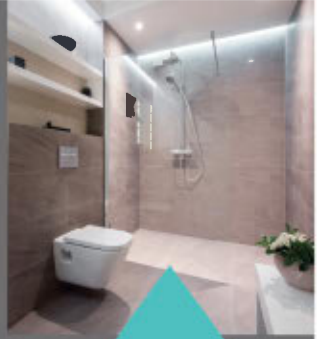
Coordinator David Garland 07342884432

**Secretary Rose Debenham 01803 813458 Or
07549827620**

If you wish to attend please contact the above persons

Date of next meeting 16th June

SHOWER IN LUXURY, COMFORT AND EASE



Are you struggling to bathe or get out of the bath?

Why not step into a brand new walk-in shower with ease.

Our expert installers will convert your bathroom into a modern, luxury bathroom. Built to suit your needs, once again making bathing safe and pleasurable. With over 25 years of specialist experience, we will personally oversee every aspect, from design to installation.

A BATH
TO SHOWER
IN 48HRS

 **ABILITY BATHE**
Specialists in Bathrooms

Request your free quotation today!

Visit www.abilitybathe.co.uk

or call 01803 814309

Est

RENDELLS

1816

www.rendells.co.uk

Chartered Surveyors - Estate Agents - Letting Agents - Land Agents - Commercial Agents -
Livestock Specialists - Fine Art - Smallholders Markets - Farm & Machinery Sales -
Valuers - Auctioneers



Newton Abbot Office

13 Market Street, Newton Abbot, Devon, TQ12 2RL

Tel: 01626 353881

Email: newtonabbot@rendells.co.uk

Ipplepen

VILLAGE CINEMA

Ipplepen Village Cinema *Presents*



HOT FUZZ

2007 | Cert 15 | 2h 1m
Director: Edgar Wright

7.30pm, Wednesday, 13th May

Slapstick comedy starring Simon Pegg and Nick Frost where an overachieving London police sergeant is transferred to a village where the easygoing officers object to his fervour for regulations, all while a string of grisly murders strikes the town. (IMDb)



IPPLEPEN VILLAGE HALL

Doors open at 6.45pm

Tickets on the door: Adult £4.00 (members £3.00), Child (under 15): £2.00

Raffle, Refreshments | Soft Drinks, Wine, Beer, Tea/Coffee, Ice Cream, Snacks

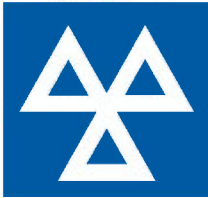




RED POST GARAGE

Est: 1896

CLASS 4



-  Local, friendly family run business
-  Fully trained technicians
-  Diagnostics
-  All types of vehicle repair work undertaken
-  MOTs on cars, vans, 4x4s and campers up to 5000kg
-  12 month warranty on all parts and labour
-  Digital Service History upload available on many makes
-  Courtesy cars available on request



Tel 01803 812389

Email mail@redpostgarage.co.uk

Web www.redpostgarage.co.uk

Open Mon–Fri 8am–5.30pm Closed Sat/Sun

Ipplepen Village Garden Show

18th July 2026



Show day is fast approaching and everything is hotting up with preparations. The programme is in the final proof stage and as ever, it promises to be a great day.

As promised, here is the full list of categories for the photography competition.

Photography - All Comers Max A4 using photo quality paper.

Autumn Splendour – a photograph showing the change in seasons from summer to autumn.

In the deep midwinter - A photograph depicting a Christmas or deep winter scenery or view.

It's a Small World - a photograph showing the world in miniature.

Mechanical Marvel - a photograph showing machinery or a building.

AI augmented - a photograph you have taken of any subject which has been augmented/altered using AI.

Photography - Children 16 & Under All Comers Max A4 using photo quality paper.

What I love about Christmas - a photograph showing a special Christmas moment, or view.

The colours of Autumn - a photograph showing the colours of the autumn season.

Man Made - a photograph of a machine or building.

Animal Magic - a photograph of a pet .

AI augmented - a photograph you have taken of any subject which has been augmented/altered using AI.

Full rules will be published in the Show programme. I hope the entries are coming along nicely.

Just a reminder that I am always on the look out for Draw prizes to compliment the fantastic top prize of £100.00.

Karen Careswell, Chairman Ipplepen Village Garden Show Society

Chairman@ipplepenvillageshow.co.uk

01803 813566



WEDNESDAY 13th



DIGITAL DROP-IN

from 10:30 *No Charge*

Drop in for free help with your mobile devices, including phones and tablets. Whether you're facing technical issues or just need a little guidance, our friendly volunteers are here to assist you!

GRIEF CAFE

from 2pm *No Charge*

A safe and compassionate space where you can share your experiences, find comfort and connect with others who understand what you are going through.

IPPLEPEN VILLAGE HALL THE TRAILBLAZERS

Raffle, Bingo & Talk: ELM Wildlife

Refreshments included

from 1:30pm £3

We hope to be expanding our Befriending service

Do you have an hour a week to spare?

Volunteer for Kerswella as a befriender and visit a housebound resident who perhaps has no other means of outside contact.

Times to suit you - this can be so rewarding
Make a difference today!

Activities

Lunches Grief Cafe Park Cafe

Digital Drop-in Trailblazers

Coffee Mornings Memory Cafes

Services

Befriending

Form Filling

Trips

Transport



VOLUNTEER

For more information:

07554 667037

kerswellacare.org.uk



DONATE

Kerswella
supporting the local community

It seems a long time ago now, but the choir's 10th anniversary concert at KEVICC in March was an unforgettable evening, and a resounding success. Booking a 300 capacity venue was hugely ambitious but the gamble paid off, as every ticket was sold! Whilst we enjoy all our gigs - whether in a field, a marquee, a hall or a church - performing in an at-capacity,



purpose-built auditorium, with state of the art equipment and live musicians, elevated the experience beyond our expectations.

It was a fitting celebration of our decade together and we managed to raise (drum roll please) an INCREDIBLE £3,270 to be split between Rowcroft Hospice and Devon Air Ambulance!

Heartfelt thanks go from all the choir to the musicians who joined us on the night - Simon Farress-Gregg (drums), Martin Bourne (bass guitar) and Siri White (cello) - to Emma Twamley and her team, who hosted the bar, with all proceeds going to the charities and to Robert and Jane whose stirring efforts selling raffle tickets over the course of the evening contributed over £1,000 to the charity funds. They all gave up their time for free to help us raise as much money as possible and make the event the success that it was.

Huge thanks also to the family members, friends and supporters who made up our audience, cheered us on from start to finish and spent generously on raffle tickets, drinks and snacks in aid of our good causes. Your enthusiasm and positive feedback encouraged and energised us and we had the BEST time!



After a much needed Easter break, it's onwards into the next decade for us, starting the new term on 23rd April offering a four-week singing course at a total cost of £10 for any ladies who want to join the choir in learning our next new song, an arrangement of Sia's 'Unstoppable'.

As always, for more information on what we are up to, and how to get involved, please follow us on Facebook or Instagram or give us a call on 07754949301



Friendly and reliable garden and property maintenance services in Ipplepen and the surrounding area



Gardens & Outdoor Spaces



Interior & Exterior Painting



General Maintenance

07730 047190

info@elmsideservices.co.uk

www.elmsideservices.co.uk



EST. 1992
REDPOST
≡ EQUESTRIAN, PET & COUNTRY LIVING ≡

VISIT THE STABLE CAFÉ
BREAKFASTS, LUNCHES, LITE BITES,
DELICIOUS BAKES & TASTY TREATS
ALL FRESHLY PREPARED



FEED & BEDDING | TACK | FOOTWEAR | COUNTRY & EQUESTRIAN WEAR

STORE & CAFÉ OPEN 7 DAYS A WEEK

LILLISFORD STUD, LITTLEHEMPSTON, TOTNES, DEVON, TQ9 6NG

WWW.REDPOSTEQUESTRIAN.CO.UK



CAFE - LIBRARY - EVENT HIRE - TODDLER TIME - GRIEF CAFE - CRAFT GROUPS



The Hub is open Tuesdays, Wednesdays and Thursdays 10am – 4pm.

We offer hot home-cooked lunches every Tuesday and Thursday, with bacon rolls on Wednesdays, and jacket potatoes and toasties at all times. The lunch menu is posted on Spotted Ipplepen on Facebook each week.

Wi-fi is free, the computer has a guest logon, and you can use our printer and colour photocopier for a minimal charge.

Our Toddler group is now in the huge back room from 9am on Thursdays. We have a ramp for buggies, and baby-changing facilities.

Returning after an illness, bereavement, or long absence? Slightly apprehensive? Join our **ReNew Friendship** table. Pick up a token from inside the porch and we'll greet you, and help you re-find or make friends.

NEW: An informal art group meets every Wednesday 1-4pm. Bring your own materials. Everyone welcome.

Upcoming free events, open to everyone, with no booking required:

- Wed. 13th May from 10.30am – Digital Drop-in – hosted by Mark.
- Wed. 13th May from 2pm – The Grief Café – hosted by Cathy.

We have 3 rooms to hire outside normal opening hours for activities and clubs.

Please contact Steve Major on 07784 719514 for pricing and availability.



Scan for news & events.

We Are Always Looking for
VOLUNTEERS **JOIN NOW!**

01803 814100

ich.org.uk



G-Elec

Domestic & Commercial

The reliable family business, an Electrician you can trust

All Electrical work undertaken, large or small

- Testing & Certification
- Inspection & Fault Finding
- Complete / Partial Rewire
- New Fuse Board Installation
- Additional Sockets
- Internal / External Lighting
- Replacement Sockets / Switches
- External Power

07561 437461

info@g-elec.co.uk



Foot Health Care Professional



Nicky Quant MCFHP MAFHP

Foot health care in the comfort of your own home



- Toe Nail Cutting
- Callous/Hard Skin Removal
- Problem Corns

For a friendly, professional service call to make an appointment

Mobile: 07787 573397



Stonelands Bed & Breakfast,
Causeway Cross, Ipplepen, TQ12 5TB
01803 812217 / 07795281123
sue.slade1963@gmail.com
www.stonelandsbedandbreakfast.co.uk



Located on the edge of Ipplepen village, Stonelands B&B is the perfect base to explore all that South Devon has to offer. The property has recently been extended and modernised throughout, including three guest bedrooms, each with an en-suite and plenty of natural daylight.

Our special Stonelands breakfasts are freshly prepared, consisting of tasty local produce which will set you up for a day of exploring. We have ample free parking available directly outside the house. We look forward to welcoming you in the near future!

Peter & Sue Slade





ALL YOUR HAIR AND BEAUTY NEEDS TAKEN CARE OF
IN THE PEACEFUL TRANQUILITY OF THE DEVON
COUNTRYSIDE.

Luxury Hair & Beauty in a Beautiful Countryside
Setting.

With over 34 years of professional experience, I
offer a bespoke, one-to-one salon experience from
my private countryside studio.

Designed for those who value quality, calm
surroundings and personal attention, every
appointment is tailored entirely to you. From
precision cutting and beautiful colour work to
expert beauty treatments, my focus is always on
enhancing your natural style with care and
attention to detail.

I pride myself on creating a welcoming, relaxed
environment where you feel completely at ease,
unhurried, listened to, and beautifully looked after.

- ✦ Private, one-to-one appointments
- ✦ All hair & beauty services available
 - ✦ Easy, free parking
 - ✦ Peaceful rural setting

Escape the busy high street and enjoy a refined
salon experience with space to unwind.

Please drop me a message on WhatsApp or text and
we can get you booked in!

☎ 07747805647

📍 Combefishacre, Near Ipplepen



BOOK SWAP

My name is Mia Reeves and I am eleven years old. I live in the little hamlet of Dainton. I am writing to you to tell you that as part of my Year 6 Civic award, I have created a book swap outside my house! It is for the public to use so they can read and enjoy a book for free. They can also swap a book of their own if they would like to!

The idea behind my book swap is my pledge to the planet, which is one of the criteria I have to complete in my Civic award. I think my book swap

supports sustainability, as I have been reusing old plastic boxes and old wood to make it. I have put the book swap in the wall outside my house for anyone passing by to use which I think is great for the community!



MAGGIE'S
INTERIOR TEXTILES

MAGGIE'S INTERIOR TEXTILES

Bespoke soft furnishings

Handmade made-to-measure curtains, Roman blinds, pelmets & cushions, crafted with care and attention to detail.

We also supply Sunwood Venetian blinds, modern roller blinds, curtain poles & tracks, with hundreds of fabric samples to choose from during your home consultation.

Curtain alterations & upcycling available – a great way to refresh your space without replacing what you already have.

Newton Abbot Based

Women-run & family owned
Trusted for over 27 years

Call Ella today!

☎ 07876 014605

🌐 maggiesinteriortextiles.co.uk

📧 @maggiesinteriortextiles

✉ hello@maggiesinteriortextiles.co.uk

27th May 2026 at 7.30pm
in Ipplepen Village Hall

Penny Townsend Gardening with Jane Austen



Penny Townsend, author of 'Stepping Westwards with Jane Austen' is fascinated by 'the scientific and artistic achievements of the 18th century, in particular Jane Austen and Gilbert White'.

Raffle and Refreshments 'Grown in your Garden' competition

Everyone welcome!

Members £3 Non members £4

Stella Exley, from Hare Spring Nursery near Kingsbridge, gave us a talk intriguingly titled Camassias, Chelsea, Chris and Chaos. Camassias are hardy bulbous perennials, which love moisture, so they are very happy after the winter we just had! They range in colour from pale ice to dark indigo and they flower in spring.

Stella met garden designer Chris Beardshaw in 2014 at a garden show. He asked her if she'd grow 2000 camassias for his Chelsea Show garden the following year. At that time Stella's nursery was in Yorkshire and her 2000 pots of bulbs were soon covered in a thick layer of snow. This was followed by a spell of hot weather and then more snow. Chaos resulted! The story did have a happy ending thankfully, as the camassias flowered at the correct time for the show and Chris won a Gold medal.



Indoor Secure Self Storage Units

OLD CIDER WORKS ABBOTSKERSWELL

- Accessible 24 Hours 7 Days a Week
- Automated Access
- Flexible Contract
- Variety of Sizes to Choose From
- Ground Floor Units Available
- Simple Online Booking System
- Safe and Secure with Individually Alarmed Units
- Deliveries accepted on your behalf (Weekday working hours only)



SERVICED OFFICES ALSO AVAILABLE

Please contact Louise for further information

info@storewell.uk 07887995458

www.storewell.uk



Opus
Engineering
Consultants

Chartered Structural Engineer

Design and detailing for all new build projects, calculations for house extensions, structural surveys and barn conversions.

Contact

Nick Kitchen on

07814 794161 or email

npk@opusengineeringltd.co.uk

INFO@SDPAB.CO.UK ● 07966504888 ● WWW.SDPAB.CO.UK

SAM DAVIES

BUILDING LTD

EXTENSIONS | REFURBISHMENTS

NEW BUILDS | CONVERSIONS

ALTERATIONS | CARPENTRY

PLASTERING | RENDERING

BATHROOMS | KITCHENS | TILING



SDPAB_LTD



SAMDAVIESBUILDINGLTD

Based in Dainton, Ipplepen



**Oil / Gas / Solid Fuel / Biomass /
Wood Burner / Solar Thermal / Heat Pumps
Custom / Bespoke Systems using
Multi Fuels Thermal Stores.**

**Grant G 1 + Oil Boiler installers
with a 10-year warranty on the boiler.**

**Design | Supply | Installation
Maintain | Service - Breakdowns**

(Installing Heating & Hot Water Systems/Boilers since 1976)

Call: 01803 812090 or 07970 047518

email: tony@safeheattorbay.uk

www.safeheattorbay.uk



10985



2474

City & Guilds



**WE ARE NOT JUST A TIMBER MERCHANT
WE ARE MUCH, MUCH MORE!
NOW STOCKING:**

- **BULK & SMALL BAGS
OF AGGREGATE**
- **AGRICULTURAL
FENCING**
- **PORCELAIN SLABS
SANDSTONE SLABS &
PATIO PACKS**

**ANY PROJECT BIG
OR SMALL,
SOUTHERN TIMBER
HAS IT ALL!**

**CALL US TODAY ON
01803 813 803**



- Patios
- Driveways
- Fencing
- Turfing
- Composite/wood decking
- Full garden renovations



DS LANDSCAPING
& driveways

07896154086

dale.dslandscaping@hotmail.com



Walter Gooding and his Village Memories

For this month's article we are indebted to Rosemary and Nikki Gooding. Recently one of our long serving members Walter (Walt) Gooding passed away. As part of their tribute to Walter the family put together a booklet entitled **Walter Gooding: My Life Story**. Over the years several of our villagers have collected their memories and we keep copies of these in our archive. These are valuable documents of Ipplepen's social history.



Walter was one of eleven children born in 1934 and living at 1 Silver Street. His father worked at Henley's & Whiteways Cider. Like many of our older members the Second World War loomed large in their memories. Walter remembered joining the Army Cadets and he recalls soldiers in the village at the time. Some were stationed in the Liberal Club (where the Health Centre is now) and he recalls lorries parked along Biltor Road and Conniford Lane in the period running up to D-Day. Again, like many of our older residents Walter has recollections of his Army days which took him away from the area. Later on, Walter spent twenty-two years working at the Conservative Club.



Of course, there have been many changes in the village in Walter's lifetime. The house where he lived in Wesley View was built in 1948 but since then we have had housing developments in Croker's Way, the Dornafeld Estate and Tremlett Grove to name just a few. When Wesley view was built there was no Mayfair Road, Clarendon Road, or Cooke Drive either. Back in 1948 there would have been Cowling's store in Bridge Street, Gribble's store in Dornafeld Road and Mrs Childs' store in Fore Street, as well as a bakery, two pubs and a Post Office in the village.

Your Home from Home in Toplepen

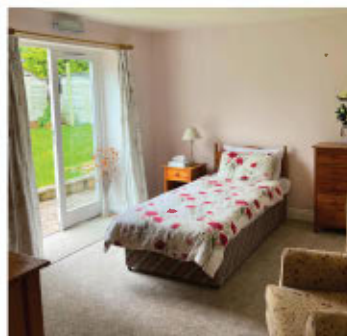
The Grange Residential Care Home

Nestled in beautiful countryside, our CQC-rated 'Good' home offers more than just stunning surroundings. Here, you'll find a family of residents and carers who'll become your second family. Home-cooked meals, engaging activities and 24-hour care from staff you can trust.



North Grange Supported Living

For those cherishing independence, our supported living home is your perfect sanctuary. Maintain your lifestyle with the reassurance of 24/7 staff presence. Share home-cooked meals with friends or relax in our cosy communal areas – just like you would at home.



Ready to find your new home?

Call us on **07704 573281** to arrange a visit!

www.southdevoncareservices.com





The Church In Ipplepen



I begin this discourse with my farmers tweed cap firmly in place. After a winter deluge in January and February most of us in this industry are really looking forward to the warmer, mellow days that May can bring. At the moment we are busy clearing fields that have contained winter fodder crops. Hayracks and feeders have been carted away, many tractor made ruts have been levelled and the miraculous tool that is the plough has inverted the soil burying the memory of a difficult sodden winter and brought soft, fresh, clean soil to the surface.

By the time you read this vibrant green shoots of spring barley should be pushing up through the soil. We are in the season when hope springs eternal, for all farmers, growers and gardeners. This will be the year when all our efforts will be duly rewarded. It is the hope for a good growing season ahead that creates effort, commitment and dedication to the task.

- My tweed cap has now been removed and is hanging on the Aga flue to dry out. Briefly I replace it with my Ipplepen Cricket Club cap and begin to dream of the season ahead where the runs flow easily from my recently oiled bat and my off spin deliveries bamboozle opposition batsmen. No doubt there will be many cricketers up and down England dreaming, planning, hoping for a successful season ahead. My cap has a 1st XI motif on it, but that was a long time ago. I.C.C. 4th XI is now where my ageing ability is still somewhat useful. My youngest daughter tells me that I am lucky that Ipplepen Cricket Club doesn't have a 5th or 6th team because if they did I would certainly be in it!

Joking aside there is great purpose in being part of a team that works together to achieve success on the field. Age, gender, ability all become secondary when as a cricketing community we work together and support each other.

Of course we all anticipate a fruitful season ahead, we plan, we discuss tactics we HOPE. I have just packed my cricket cap back into my bag because the season is still a couple of weeks off.

Some of you may remember the words of the hymn "Lord of all hopefulness, Lord of all joy". I recall it being a regular during the assemblies that Alan Vickery ran when I was at Ipplepen Primary School many moons ago.

Of course hopefulness is right at the centre of the Christian Faith.

In the Jesus event death, pain and loss were replaced with the revelation that yes although Christ had died, he was in reality very much with them in the eating of a fish breakfast together and in the sharing of bread and wine.

We all need something to look forward to to keep us on an even keel. May the things of spring so embodied in the serene, delicate colours of early May bring you all the hope you need this year.

May God's blessing be upon us all this spring.

Stephen Harris (steward at Ipplepen Methodist Church)

St Andrew's Church, Ipplepen

Contact us

Rector:	Reverend Andrew Down	813403
The Church Office:	Mrs. Alice Blanchard	814178
St Andrew's Church Wardens:	Mrs. Sue Hird 813386	Mr. Clive Tompkins 07704 919994
St Andrew's Church Hall Hire:	Pauline Emmerson	p.emmerson@live.co.uk

May 2026 – Services

Sunday 3rd May – 5th Sunday of Easter

Time	Service	Location
09.00am	Holy Communion	Denbury
11.00am	Holy Communion + Children's Activities	Ipplepen
5.00pm	Encounters Evening Service	Ipplepen Methodist Church

Sunday 10th May – 6th Sunday of Easter

Time	Service	Location
09.00am	Holy Communion + Children's Craft Table	Broadhempston
11.00am	Holy Communion	Ipplepen
5.00pm	Evening Prayer + Benediction	Denbury

Sunday 17th May – 7th Sunday of Easter

Time	Service	Location
09.00am	Holy Communion + Children's Activities	Denbury
11.00am	Holy Communion + Children's Activities	Ipplepen
3-4.30pm	St. Andrew's Outside	Ipplepen Church Hall and Field

Sunday 24th May – Pentecost

Time	Service	Location
09.00am	Holy Communion	Woodland
11.00am	Holy Communion	Ipplepen
5.00pm	Reflective/Taize Evening Worship	Broadhempston

Sunday 31st May – Trinity Sunday

Time	Service	Location
11.00am	Holy Communion - Mission Community Joint Service	Ipplepen



St Andrew's Church, Ipplepen

www.missioncommunity.org.uk 01803 814178

office@beaconparishes.co.uk

www.facebook.com/StAndrewsIpplepen

A Free All-Age St Andrew's Outside Community Event

"The Church is Born... Join the Pentecost Party"

You are invited to the party!

Join us in the Church Field and Church Hall. Free of charge! Activities, wide games, face painting, reflection, food/hot dogs and fleepit.

Sunday 17th May

3pm - 6.30pm

Coffee & Chat!

AT ST. ANDREW'S CHURCH
SATURDAY 9TH MAY
10.30AM - 12 NOON

HELD ON THE SECOND SATURDAY OF EVERY MONTH.

A warm welcome awaits you. There is no charge but donations are gratefully received.

Dogs on leads and children are welcome.

CREAM TEAS!

Monday 25th May 3-5pm
Church Cottage, Denbury

Denbury May Fair CAKE STALL
Monday 4th May at 1pm.

If you're able to donate **CAKES, BREADS & PASTRIES**, please bring them to the stall on The Green from midday on the 4th or leave them at 7, North Street or leave them in the Church between 9am and 10am on the 4th.

Thank you so much!

May additional events.

Date	Time	Event	Location
Saturday 2 nd May (1 st Saturday of each month)	10am – 12 noon	Coffee Morning	The Parish Rooms, Woodland
Wednesday 6 th May (1 st Wednesday of each month)	12 noon	Food for Thought Lunch Club	Church Hall, Ipplepen
Thursday 14 th May (2 nd Thursday of each month)	10.30am	Coffee Mates	Church Cottage, Denbury
Saturday 9 th May (2 nd Saturday of each month)	10am – 12 noon	Coffee & Chat!	St. Andrew's Church, Ipplepen

Special Occasions marked with floodlighting of the church tower

- 27th Apr - 3rd May In memory of Jim Clark on his birthday, 30th April, from Tony, Marilyn and family
- 3rd May – 9th May Jeanie, remembered with love on your birthday. The Moore family xxx
- 4th - 10th May Saturday 6th May - In loving memory of Rex Osborn on his birthday, with love, the Hooker and Osborn families
Jeanie, remembered with love on your birthday. The Moore family xxx
- 11th - 17th May A beacon of light on 13th May for Wendy Jensen on her birthday
Wishing Marilyn Clark a happy birthday on the 14th May. Love from Tony, Andrew, Fiona and all the grandchildren
- 'In remembrance of my darling husband David Hotten who died 25 Feb 2015 and whose birthday was 17.5.1948' from Margaret Hatten*
- 18th - 23rd May In memory of my husband Eric Wilson Bennett (19/4/2009). From Betty Bennett
- 24th - 30th May Linda, David and Hannah Simmonds for Katie's birthday on 25th May
Celebrating the birthday of our beautiful granddaughter, Flora on 27th May. Ingrid & John Marsh
In memory of Jean Rogers-Came, Kitty Barwick (her mother) and Bryan Rogers (her late husband), as they all passed away around this time of year. Rosalind
- In remembrance & love of my granddaughter Amy Victory Hird (30/5/1997). From Betty Bennett
- 31st May - 6th Jun With cherished memories of our wonderful Mum and Nan, Barbara Moore. Called to her Heavenly Home to be reunited with her darling Douglas 5th June 2005. Always loved and missed by Shirley and family
In memory of Jean Rogers-Came, Kitty Barwick (her mother) and Bryan Rogers (her late husband), as they all passed away around this time of year. Rosalind



- Sponsor forms are available in St. Andrew's and at www.missioncommunity.org.uk/floodlighting
- Or email: ippleeflood@beaconparishes.co.uk
 - Donations can be made by cash, cheque, BACS, via www.justaivina.com/fundraising/ippleeflood or via the QR code



IPPLEPEN METHODIST CHURCH

Preachers for May



3 rd 10.30 Rev Kevin Hooke

5pm Encounters Informal, reflective worship

10 th 9.15 for 9.30 Family Breakfast Church

Informal church with children in mind – Sara Crouch

17 th 10.30 Local Arrangement

24 th 10.30 Miss Sara Crouch

31 st 10.30 Mr Andrew Parsons

All are welcome to any of these services

Local Lay Pastor: Miss Sara Crouch 07845 278253

Contact for Senior Steward: 01803 813110

Teignbridge Circuit Superintendent: Rev Kevin Hooke 07772
571647

Lettings Secretary: Mr Steve Major 07784 719514



MALLANDS CARE

“Professional Care with a personal touch”

Mallands is a friendly, caring family run residential care home providing high quality care with a personal touch.

We provide a range of services including

- Residential Care
- Respite Care
- Day Care
- Meals at home

Contact us on

01626 366244

Email : enquiries@mallands.co.uk

www.mallands.co.uk

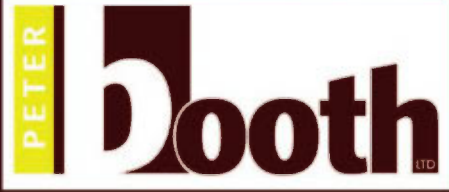


Our mission is to provide a safe and caring environment for residents, who can maintain their independence and a lifestyle that is as close to that as they might expect at home, with the peace of mind that there is always someone there for them to provide assistance when required.

We offer day care to individuals to provide social interaction and to join in our activities. It also gives our visitors opportunity to use our services and facilities, such as chiropodist, hairdresser and our bathing facilities. We can provide transport for those in the local area.

For people living locally, we can provide hot nutritious meals delivered to your home Monday-Friday. Individual dietary needs and preferences will be taken into account, with individuals having the opportunity to choose from the day's menu by 9:30am.

Mallands Residential Care Home, Odle Hill, Abbotskerswell, TQ12 5NL



We are a family firm now in its second generation that has been manufacturing and installing high quality kitchens & bedrooms for over 35 years.

01626 333600

www.booth-kitchens.co.uk

Peter Booth Kitchens Ltd.
The Old Cider Works, Manor Road, Abbotskerswell,
Newton Abbot, Devon TQ12 5NF

IPPLEPEN CONSERVATIVE CLUB

New members, non-members and affiliate members always welcome



DARTS

WEEKLY MEAT DRAW, QUIZ NIGHTS
AND REGULAR ENTERTAINMENT

**ALL MAJOR SPORTING EVENTS
SHOWN ON OUR BIG SCREEN IN OUR
FUNCTION ROOM & BAR**



POOL

COMPETITIVE DRINKS PRICES

We look forward to welcoming you soon!



SPORTS



Monday - Thursday: 5pm - 11pm | Friday: 4pm - 11pm | Saturday: Noon - 11pm | Sunday: 1.30pm - 10.30pm



FORE STREET • IPPLEPEN • 01803 812823

IpplePlanet: Gardening for Wildlife



As May 2026 arrives in Ipplepen, our gardens become vital refuges for local biodiversity. To support Devon's wildlife, prioritise planting nectar-rich flowers like lavender and honeysuckle to attract pollinators. Letting patches of grass grow longer provides shelter for insects and foraging space for birds or try No Mow May.

Creating or refreshing an existing, small water feature is essential. Look in the shed to see what chemicals are lurking there - waiting to be cleared out. Reducing chemical pesticide use allows natural predators like ladybirds to flourish.



Connecting gardens with hedge or fence gaps helps hedgehogs travel safely, creating "wildlife highways". Simple actions, such as adding log piles for beetles or hanging bird boxes, transform Ipplepen gardens into a connected, buzzing, and colourful patchwork, essential for battling climate change.

For more detailed information do visit the excellent resource provided by the Devon Wildlife Trust. It is easy to read with lots of tips and suggestions. It will help you find something that you can take on and apply to your garden, space or container. <https://www.devonwildlifetrust.org/wildlife-gardening#>

Why not consider applying for Devon Wildlife Trust's "Wildlife Garden Award"? Whether creating a pond, planting wildflowers, or restoring entire landscapes, add your project to the Local Nature Recovery Strategy (LNRS) Devon Nature Delivery Map and see what else is happening near you. At the Village Show we will be distributing bird boxes for a donation. Please email ippleplanet@hotmail.com to find out more.



...hot off the plot: what's happening in **May**

The arrival of May is like reaching the slow climb to the top of a rollercoaster for us gardening folk. Slowly and patiently we await the descent into summer and the allotments suddenly bursting into lush green bountiful life. For now though our attention is turning to our beans and that agonising decision of when to plant them out. Runners, French, dwarf - green, purple, yellow - you will be sure to see an array making their way up carefully constructed poles towards the far end of this month. To the delight of the Ippepen badgers some plot holders will also be putting their sweetcorn into the ground this month. If they (the badgers that is) save any for us, come Autumn the reward of sweet home-grown cobs picked, cooked and eaten within minutes is like nothing else. Sublime.

What we're sowing & growing

Beetroot - Brussel Sprouts
Cabbages - Calabrese - Carrots
Cauliflower - French Beans - Kale
Lettuces - Peas - Radishes
Rocket - Runner Beans - Leeks
Spring Onions - Sprouting Broccoli
Swedes - Sweetcorn

What we're harvesting

Asparagus - Baby globe artichokes
Garlic - Oriental Leaves - Radish
Rhubarb - Spinach - Spring Onions
Spring Cabbage - Turnips

Something to try out with Carrots

Have you ever considered how some gardens manage to grow carrots long and straight as you often see at the Flower Shows in summer. This is how it's done.....

Get some 3 inch drain pipes and cut them into 18-24 inch lengths. Fill them with a 50/50 mix of fine potting compost and sharp sand. Plant 3 seeds and throw away the two weaker plants when they show, keep well watered and protected from carrot fly.

After 12/15 weeks lift the tube out of the ground and tap the sides, the compost and sand will fall out leaving you with long, straight carrots.

IPPLEPEN ALLOTMENT ASSOCIATION

If you'd like to have your own allotment and become part of our friendly community, email Catherine Freston to join the waiting list.
ipplepencouncil@btopenworld.com

Home grown tastes better!



IPPLEPEN BOWLING CLUB WHIST DRIVE

The Easter weekend break was now behind us, and Thursday 9th April saw many people attend the monthly Whist Drive in the afternoon. It was good to welcome back Elizabeth Church who hadn't been able to come for a couple of months, and also to see so many of our new friends back again from their first time with us last month.

As always, my thanks go to everyone who supports the Whist Drive and for the generosity of the players who bring in prizes for the raffle, which is greatly appreciated. This month I would also like to add my thanks to Brian Wallace and Trevor Moore who helped setting up the tables and for Olly Winter who helped me in the kitchen with refreshments. Thanks also to Keith Dommett who is our brilliant "waiter" serving all the teas and coffees at half time! And again, big thanks to everyone who helps at the end of each Whist Drive with packing the tables and equipment away, leaving the Clubhouse clean and tidy.

The winners this month were as follows: Ladies (or those playing in a ladies role) – 1st John Southcombe, 2nd (wait for it) ... it's Margaret Bartlett and 3rd Anne Mason. As Margaret had done so well, it meant the booby prize was now going spare and was awarded to Elizabeth Church. Sorry Margaret, but it just shows what fun we all have together with our teasing and laughter !
Gents – 1st Trevor Moore, 2nd Des "Patch" and 3rd Viv Smith. The booby prize was awarded to Les Holman-Quick.

Whist Drives are always held on the second Thursday of every month at the Clubhouse, and so a date for your diary of the next Whist is **Thursday 14th May starting at 1.30pm**
Everyone will be made very welcome, it's a lovely afternoon to catch up with each other or meet new friends, whilst enjoying a game of cards.

Shirley Northwood 07711 016495

IPPLEPEN WOMEN'S INSTITUTE REPORT FOR APRIL 2026

Wow! Did someone say chocolate!! Now we know where the interests of the W.I. ladies lie. Their secret is out!

Why do I say this? Well our speaker for this month was Michael Barber from Ashburton Cookery School and founder of BARbers artisan chocolate makers. He came, ably supported by his Dad, to talk to us about chocolate making.

About five years ago Michael decided to start to make his own chocolate. He explained the process to us starting by showing us a cocoa pod from which the beans are obtained and getting members to try to crush some beans. He explained that the beans are first dried and then roasted which makes them easier to crush.

They are then spun and the suction takes the husks away leaving the nibs. This process is called winnowing. The husks are processed and the nibs are crushed, releasing the fat, and a paste called cocoa mass remains. It takes 24 hrs to get a smooth cocoa mass. To get milk chocolate the squeezed nibs are mixed with cocoa butter and milk powder is added. Chocolate can only be called chocolate if it is made with cocoa butter and not vegetable oils, such as palm oil, or shea butter.

In 2023 the price of cocoa beans went through the roof mainly due to poor harvests. Much of the cocoa came from the Ivory Coast. Cocoa trees last for 25 years before the yield falls. It can be very expensive to replace the trees. The demand began to fall. The price of the beans is now beginning to fall again slightly. Michael then gave us all samples of 4 different flavours of chocolate. One was a white raspberry chocolate, then coconut and ginger, followed by 75% dark chocolate with beans from Tanzania, which has a fruity flavour and then an 80% dark chocolate with beans from India. The chocolate is slightly bitter as it is roasted heavily.

He then explained about the drinking chocolate they make and how they are experimenting with other flavours such as lavender. It all sounds very exciting.

Everything they do is geared to help save the planet. Their beans are from organic, fair-trade farms and all the packaging is biodegradable.

Michael does do tours around his factory which many of our members were interested in so I am sure we will see him again in the future. We thanked him for a very interesting afternoon.

We had our usual flower of the month competition which was won by Marion Penny with a lovely peony and our competition to create a chocolate bar which was won by Sally Bryson.

Next month we are having in-house entertainment, mainly a beetle drive, as many of our members occasionally just want time to chat. We can't promise chocolate, unless you win but if you would like to join us please come along to the village hall at 2p.m. on the 12th May

Barbara Hersey- Secretary

Nick Courtier

LOGS - TREE SURGERY

THE SHED · IPPLEPEN

Mobile 07973 121152

Stuart Phipps

The Chimney Sweep Company

- Chimney Sweeping/ Supply and install Wood burners and Multifuel Stoves
- Re-lining of Chimneys/ Fitting of Chimney Pots and Cows
- Sweeping Certificate issued/ £5M Liability Insurance
- Based in Ipplepen / HETAS Registered Installer
- HETAS Registered Installer



Contact: 01803814295 or 07729478999 Email: enquiries@chimneysweepcompany.net

Doug Bacchus

Plumbing & Heating Services



All Types of domestic work undertaken
Installation & Repairs

- Gas & Oil Installations
- Annual Gas Boiler Services
- Landlord Safety Certificates
- Power Flushing
- Boiler Repairs & Upgrades
- Solar Installations
- Bathroom Installations
- Underfloor Heating
- Unvented Cylinders
- Heating Upgrades

VISSMANN

Tel: 01803 813046

Mob: 07966290967

Email: Dougbacchusplumbing@gmail.com

HONEST & RELIABLE (Your locally based installer)

IPPLEPEN PARISH COUNCIL

Report on Parish Council Meeting held on Tuesday 7th April 2026 for a more detailed report please read the draft minutes (yet to be approved at our next meeting) on our website: www.ipplepenparishcouncil.gov.uk

CORRESPONDENCE:

a) Ipplepen Carnival Club have emailed asking for permission to use the playing field on 7th and 8th August 2026 for the Carnival week. Councillors agreed unanimously **Action** - Clerk to reply that the Parish Council are happy for the Recreation Ground to be used.

b) Ipple Tipple have emailed asking for permission to use the playing field for the Garden Show on 18th July 2026. **Action** – Clerk to reply that the Parish Council are happy for the Recreation Ground to be used on the conditions that extended toilet opening only if security is provided.

OUTSIDE BODIES

Coun.Mrs.Calland reported that the Village Hall Committee has appointed a new Chairman and new committee members in place
Coun.Smith attended the Stoneycombe Quarry meeting. Coun.Smith mentioned that the playing field may need some materials for the access for the Skate Park, which they said they will look into.

AMENITIES: - Coun.Palethorpe

The Minutes of the Amenities meeting held on 10th March 2026, were approved and taken as read.

- a) Play Park inspections are in hand.
- b) The DAAT lights have been checked and are all working.
- c) The toilet cleaner is getting on well.
- d) Allotment inspections have been carried out.
- e) Allotments:
 - Several plots unpaid or vacated
 - Reallocation in progress
 - Review of payment terms to be undertaken

SKATE PARK – Coun.Rattlidge

Parish Borrowing have approved the application for £60,000 for the new skate park. **Resolved:** Proceed with contractor engagement. Obtain specifications for access works.

Delegate progress to Chair, Clerk, and Coun.Burnham.

KERSWELLA CARE – Coun.Rattlidge

A total of 59 transport requests came in for March – 20 for the Ipplepen and surrounding area.

From this we had 4 cancelations and couldn't find a driver for one appointment.

We have had a boost with a couple of new volunteer drivers which has helped as we're down one or two for the Ipplepen area.

Going forward we will be promoting our other services in the Ipplepen and surrounding area including befriending and transport.

We are always looking for a variety of volunteer roles so if anyone is interested they can call Gill on 07554 667037 for more information.

The Digital Drop-in at the Hub is still well attended, not so the Grief Café. If there is no interest in it over the coming months we will have a rethink on running it.

The Trailblazers continues, they were off on a well-attended trip in April and in May there is a talk by ELM Wildlife. All are welcome, you don't have to commit to every month.

HIGHWAYS & RIGHTS OF WAY – Coun.Smith

The minutes from the Highways meeting held on Wednesday 18th March 2026 were taken as read.

a) Part of Mayfair Road needs digging up to sort the drainage out. **Action** Clerk to contact DCC to see when this will be carried out.

b) A381 Bus shelter – a quote has been received for the hardstanding for the bus shelter. **RESOLUTION:** Coun.Farrow Proposed to accept the quote from White Rose Tarmacadam at £2,968.00 + VAT, Seconded by Coun.Palethorpe. All unanimous.

c) Speed Monitoring (VASS)

- Existing unit to remain in place
- Additional units to be explored

To note the date of the next PC meeting: **Tuesday 5th May 2026 at 7.15pm**

The Parish Clerk

District Report - Cllr David Palethorpe

Launch of the Crisis and Resilience Fund

It has been a busy month at District Council, and I was very pleased that we reached agreement to launch the Teignbridge Crisis and Resilience Fund, which will come into effect in mid-April.

In an increasingly volatile world, we recognise that residents already affected by the cost-of-living crisis are likely to face further pressures, particularly due to rising fuel costs—especially for those reliant on oil for heating.

This fund is designed not only to provide immediate financial assistance but also to offer longer-term advice to help residents become more resilient. Unlike previous “one-size-fits-all” approaches, this scheme will be targeted specifically at the most vulnerable, particularly elderly residents and families with young children.

Further information, including details on how to apply, will be circulated once the fund is formally launched.

This is a positive step forward and demonstrates our commitment to delivering support where it is most needed.

Passing of Councillor Mike James

It is with great sadness that I report the passing of Councillor Mike James at the beginning of April. Mike was well known to many, having served as a councillor in Dawlish and previously in Torquay. He was also a respected governor of the Torbay and South Devon NHS Foundation Trust.

He will be greatly missed for his contribution to public service.

Waste and Recycling Delays

Due to operational issues earlier this month, some waste and recycling collections were delayed.

Crews worked exceptionally hard to address the backlog, including working on Good Friday to catch up. While there were disruptions in some areas, the teams have done a fantastic job overall.

Coastal Safety and Beach Management

Following a significant cliff fall at The Ness in Shaldon on 27 March, the coastal path in that area has been closed.

Residents and visitors are strongly urged to respect all safety closures, as there is a risk of further cliff falls.

On 7 April, the Executive approved the Beach Management Plan, covering Teignmouth and Shaldon. This is particularly important following winter storms that have removed large amounts of sand, exposing sections of the sea defence structures.

The plan will now be implemented in partnership with the Environment Agency and coastal protection teams to safeguard these areas.

Car Parking Changes

Car parking continues to be a significant and sometimes controversial issue.

Teignbridge District Council manages 82 car parks across the district, and several changes have recently been introduced:

- Simplification of parking permits to make them clearer and more consistent
- Closure of Venture Court Car Park (Newton Abbot) following the end of the lease on 31 March 2026. This a privately owned site that Teignbridge has leased for a number of years however an agreement was unable to be reached on renewing the lease and the site has now reverted to being under the control of the owners
- Changes to Newfoundland Way Car Park (Newton Abbot), which is now all-day parking

These changes aim to improve clarity and usability for residents and visitors.

Planning Matters

Planning applications continue to be submitted across the parish.

As the Parish Council is a statutory consultee, it is asked to comment on applications. However, as I sit on the Teignbridge District Council Planning Committee, I do not comment at parish level to avoid any suggestion of predetermination.

That said, I remain available to discuss concerns with residents and can raise issues with planning officers or present them at committee when appropriate.

For clarity, there is an important distinction between:

- Predisposition – having an initial view but remaining open-minded
- Predetermination – having a fixed view regardless of evidence

Pavement Parking

Pavement parking remains a frequent concern raised by residents.

I sit on the national PATROL (Parking and Traffic Regulations Outside London) body, where we have repeatedly raised this issue with government. We have

advocated for a nationwide ban on pavement parking, similar to legislation in Wales.

This ongoing lack of legislation is frustrating for both residents and local authorities. We continue to press for clearer legal powers to address this issue.

Cllr David Palethorpe

Teignbridge District Council – Councillor for the Ipplepen Ward

Contact david.palethorpe@teignbridge.gov.uk Mob 07506422686

County Report - Cllr Heather Horner

For this month's report I wanted to provide parish councils with a brief summary of how my locality budget has been used over the past year to support communities across my electoral division.

During the 2025–26 period, I have focused my locality funding on projects that deliver clear, practical benefits to residents, particularly those that strengthen community facilities, support wellbeing, and help maintain essential local infrastructure.

A key area of spend has been community halls and centres, where funding has supported improvements to shared facilities that are widely used by local groups and residents. This has included contributions towards the replacement of worn carpets, helping to improve accessibility, safety and comfort, and ensuring these venues remain fit for purpose over the long term.

I have also used the locality budget to support health and wellbeing initiatives, with a particular focus on older residents and those at risk of isolation. Funding was provided to Kerswella Care, which works across Kingskerswell and Ipplepen to deliver a range of services including transport to medical appointments, memory cafés, befriending, digital support and social activities. These services provide valuable support to many residents and help reduce loneliness within our communities.

In addition, locality funding was approved to support the maintenance of community defibrillators, specifically contributing towards the replacement of essential batteries and pads. This ensures that lifesaving equipment remains operational and available when it is most needed.

Throughout the year, I have worked closely with parish councils and local groups, encouraging applications and discussing potential projects. I am keen that the locality budget continues to be used for initiatives that demonstrate strong community benefit and good value for money.

From mid-May 2026, my new locality budget allocation will be £10,000. This funding will again be available to support community groups, voluntary organisations and local projects across the division.

Parish councils and community organisations are very welcome to contact me to discuss ideas or potential applications. This is particularly important this year as I do not know whether the locality budget funding will continue under LGR.

Cllr Heather Horner

Ipplepen & The Kerswells

PACK IT, BOX IT AND WE WILL STORE IT

CLEAN • SAFE • SECURE



Secure Container Storage • Internal Storage Units • Long & Short Term Storage • Unlimited Daytime Access
CCTV • Packing Materials & Boxes • Archive Storage

Westcountry Self Storage

01803 813943
07850 317304

On the Main Road A381
Newton Abbot to Totnes Road
Totnes Road, Ipplepen, Newton Abbot
Devon TQ12 5TN

www.westcountryselfstorage.co.uk

* All prices subject to VAT

- Overgrown Garden Clearance

- Hedge Cutting



- General Garden Maintenance

- Fencing

SUPER SCAPES

Garden Maintenance and Fencing

Friendly & Reliable, Based in Ogwell.

Tom Wotton 07969 757 727 info@superscapes.co.uk





MANOR

Self Storage | Business Park

Storage For Everyone

Manor Business Park

Drive up storage

Warehousing

Workshops

Office rentals

Home to over 20 local businesses



www.manorselfstorage.co.uk | Tele: 01803 812570

Dainton Manor Business Park, Dainton, TQ12 5TZ



QUAY

SCAFFOLDING

For all your scaffolding requirements
from complete design scaffolds
to basic access scaffolding.

For a free quotation and friendly advice, please call



TOM ALLEN
07980 632604



Ipplepen based

OUR MONTHLY WEATHER MARCH

Year	2026	2025	2024	2023	2022	2021
Highest temp. (°C)	19.8	17.2	16.1	15.2	16.2	17.0
Lowest temp. (°C)	-0.4	-3.6	-1.9	-0.4	-0.2	-5.2
Average max. temp.(°C)	12.5	11.7	11.8	11.0	11.7	11.5
Average min. temp. (°C)	4.3	2.8	4.6	5.3	4.5	2.9
Total rainfall (mm)	43.4	4.4	200.0	210.0	78.3	45.6
Number of dry days	15	24	7	7	21	23

General Comments: Well, this March came in like a lamb and went out like a lamb but did make some half-hearted attempts to be a little lion-like in the middle! It was a dry and quite calm month with persistent highish pressure throughout which gave quite long lasting stability. Some of our records have been challenged but just one was broken.

Our rainfall was the tenth lowest of any March since before 1987 but nowhere near last year's exceptional low. Our average expectation is 81.4 mm so this month had just over 50% of that norm. Our highest daily rainfall was 17 mm and no other day produced even 5 mm; two of our 'wet' days each produced just 0.2 mm of rain. Even so, the rainfall for the first three months of this year is still almost 60% above average thanks to January and February! This scenario has brought slightly less dry days than the average. Our typical expectation for March is 16 or 17.

Those stable high pressures meant some fairly high daytime temperatures but often the evenings clouded over so low night-time temperatures were rare. Our maximum temperature has only been exceeded once in 40 years; in 2012 it reached 19.9°C. It was fully 4°C above the mean. Historically, we could have expected just one or two days when the maximum temperature exceeded 15°C but this year we had three. Our minimum temperature was also well above the mean of -1.6°C, well into the upper quintile of our records and there have only been nine higher minima. As expected, this spilled over into both the average maximum and average minimum temperatures; the average maximum temperature has only been exceeded three times and is 1.25°C above the mean whilst the average minimum temperature is well into the warmer half. Taken together, the average temperature for the month was 8.4°C, 0.7°C above the mean and well into the upper quintile of our record. There have only been nine higher than this. There were just two days with temperatures at or below zero whereas we would have expected about six from a typical March.

Apart from some attempted lion-like behaviour mid-month, the barometer remained fairly stable reaching a high of 1034 mb and a low of 1000 mb. The higher pressures brought many calm days and we saw a few of those when dense, early morning mists (almost fogs) were very slow to dissipate and we had two minor instances of hail.

Our low pressures also brought the strongest wind gusts of the month with the most powerful just over 33 mph (Near Gale, Force 7) from the south-south-west. Generally though, it was a calm month with few gusts exceeding 20 mph and the Wind Run was only 1860 miles – the lowest in our, albeit short, record. Wind directions were highly variable touching all points of the compass during the month. All-in-all, not an unpleasant month to be out and about provided you wrapped up warmly!

Martin Stentiford

IPPLEPEN BOWLING CLUB

On March 20th we held our Annual dinner and presentation evening at the Ten Tors, Kingsteignton, a good evening was enjoyed by all .

Our winter season has come to a close and we have our first competition winners of the year .

Mixed Singles.winner Lynne Sellers, Runner up David Northwood .

Mixed Pairs .Winners Lynne Sellers and David Northwood .

Runners up Mary Oliphant and Martin Wilkes.

We also say goodbye to our winter members who will be returning to their clubs for the summer where they play on grass.We wish them a successful season .

We held our commencement day for the coming season on April 4th .

On a very windy day Niall Tewson from The Milk Shed bowled the first wood of the season ,looked on by his wife Kelly and their young daughter Otterley, many thanks Niall.

Then 24 players battled the wind and drizzle and the winning team were

Terry Morris, Rachael Lankshear and Anisley Parkinson .All the games were close .

We have a very busy season coming up with the Men's Over 55 league,

Ladies Triple Challenge League. Mixed Riveria League

Plus some Friendly Matches.

And always a Challenge the Ladies v Gents on April 25th

We always welcome new members so why not give us a visit and try your hand at bowling .

Free tutoring is available by arrangement with Mary Oliphant phone 01803872683 for details

June Coombe .



Hello! My name is Charlotte, I am 16 years old and I am going to the World Scout Jamboree in Poland in 2027 as part of the UK Scout contingent. Some of you will remember that 4 Scouts from Ipplepen represented the UK at the World Scout Jamboree in Korea in 2023. They inspired me to do the same and I am thrilled to have been selected to represent Devon (and Ipplepen!) next year.

I have been a member of Scouts for over 6 years (and a Brownie before that) and it has been a really important part of my life. Through Scouting I have learnt so much including how to work as part of a team, take responsibility and push myself outside my comfort zone. Camps such as the Hurdlestone Challenge, outdoor activities (caving was one of my favourites) and community events have helped me become more confident and independent. I enjoy supporting others and being involved in my local Scout group here in Ipplepen. Some of you may also remember when I made Ukrainian flags to raise funds for Unicef's work in Ukraine after the invasion in 2022.



The World Scout Jamboree is one of the most important events in the global Scouting movement. It brings together thousands of young people from around the world to celebrate unity, adventure, and cultural exchange. It is held once every four years and is an amazing gathering which offers Scouts the opportunity to experience a world of diversity while participating in activities that support personal growth, leadership, and global citizenship. The Jamboree is also a platform for addressing global issues. Sustainability, peace, and youth empowerment are all central to the event and there are various programmes designed to educate participants on these topics and inspire us to take action in our own communities.

Being selected for the World Scout Jamboree is such a huge honour and an opportunity that I know I will never forget. I am one of 36 Scouts chosen to represent Devon in Poland. For me, the Jamboree is about much more than travel - it is about meeting young people from all over the world, learning about different cultures, sustainability and how we can work together to create a better future. I believe this experience will help me grow as a person, improve my communication skills and broaden my understanding of the world at an important stage in my education. I am so excited to be a part of it.

After taking part in the Jamboree I am committed to giving back to my Scout group and local community in Devon. I would like to share what I learn with younger Scouts through talks, activities and helping at events, so that the benefits of this experience extend beyond just me. I'd also be happy to talk to any village groups.

The last year has been really difficult for my family. In 2025 we lost our whole family farming business due to avian flu, which has had a big emotional and financial impact on us. Although very difficult, going through this experience has taught me resilience, gratitude and determination, and has made me even more appreciative of opportunities such as the Jamboree.



to attend the Jamboree, each Scout has to raise a total of £3,690. I am currently at the beginning of my fundraising journey and I have lots of ideas to raise money this year including selling old toys and books I no longer need, bake and craft sales and events here in Ipplepen such as running an afternoon tea and holding a quiz night. I also hope to do some joint fundraising with other Scouts from my district. So far I have raised £460 by running outdoor play Easter holiday sessions and bake sales at our family farm. I have set up a GoFundMe page for donations at <https://gofund.me/e90eac8c> and also applied for grants from charitable trusts - I am very grateful to have been awarded £350 from the Devon Educational Trust.

I would really appreciate your support at the events I run and any donations – it means so much to me to have the support of my village. If you have any questions please get in touch via my Jamboree e-mail csaunders.wsj27@gmail.com or with our Scout treasurer at ljsimmonds@talk21.com. I will also be writing more articles to let everyone know about my journey to Poland and my fundraising efforts!

Thank you! Charlotte Saunders

Ipplepen Amateur Dramatic Society



The merry month of May already – I hope you are enjoying your lighter evenings and more verdant countryside.

I have only one item to tell you about this month and it is our **A.G.M.** which will be held at the **Village Hall** in the side room at **7:00 p.m.** on **Monday, June 22nd**. Everyone is welcome to attend and it would be lovely to see some new faces as well as our “regular” turn out.

This would be a great opportunity for anyone interested in joining our society to come along and meet us, as the business of electing a new committee never takes very long. So on behalf of us all, I welcome your attendance.



Local Honey,
Beeswax candles and
Beeswax hand lotion.

Call Kathy 07925 115709

BIRBECK LANDSCAPES

Jaynes Free Range eggs

Free quotes-Hedge cutting.

Locally Farmed

Lawns cut. Fencing. Turfing

Free Delivery Ipplepen Mag area

Rubbish can be removed

Contact Simon or Jayne 07855 435237



Knowle Tree Services

Your Local Tree Specialist

ALL aspects of tree care since 2006

Domestic and Commercial Tree Work
Hedge Cutting and Removal
Qualified and Highly Skilled Team
Planning Applications
Help with TPO's
£5m public liability insurance
FREE consultation and NO obligation
quotations

LOGS

Dried Logs always available for delivery

Tel. 07803 441759

Tel. 07711 828184

enquiries@knowletreeservices.co.uk

www.knowletreeservices.co.uk



Handy Bob



Any odd job that needs doing,

Lawns, Small hedges, Borders, Painting etc.

Just phone to find out more on: **01803 812723**

Ipplepen Scout Group



Squirrels. The Squirrels were very excited to have a visit from the police at the end of term, the highlight of their evening being a chance to sit in the police car and hear the siren. This visit tied in with our badgework about people who help us in the local community. They also had chance to ask lots of questions and do their own finger printing. The weather was fine on the last week before Easter so we were able to get up to the common, look for signs of Spring have an Easter egg hunt. It was lovely to be able to get out and about and we are looking forward to more sunny evenings next term. We said goodbye to 1 Squirrel who will now move up to Beavers and will welcome 6 new Squirrels to our Drey. We now look forward to the fun activities that we have planned for the Summer Term.

Beavers. Beavers have had a busy time working through their global issues badge. They looked at recycling, how fair trade works, animals that are endangered & how people across the world get their drinking water. They made a cardboard posy for mother's day & learned how to lay a table. We also held our own talent show. Who knew there were Musicians, dancers, singers, magicians & comedians amongst our children. We also did box car racing, which was an enjoyable evening & finished the term with Easter crafts.

Cubs.. Since last time Cubs have enjoyed an Ireland night looking at some badges from Irish Scouting along with their Promise and Law, they played a beetle drive based game building a Leprechaun, crisp tasting, and other Irish themed games. We also looked back over 110 years of Cub Scouts and have started with re-creating wolf head totems- Cubs were Wolf Cubs when they first started – and added ribbons with their names and badges achieved. Something every Pack did. We finished the term with some Easter themed games and activities.

Scouts The Scouts had a busy end to the Spring Term. The bake off was a great success with each patrol preparing a two-course meal for themselves and leaders to enjoy. We also did a message relay around the village which was a new wide game for us and lots of fun. We have an action-packed programme planned for the Summer Term and are looking forward to spending lots of our evenings out and about in Ipplepen and around the local area. At the start of May we are very proud to have 2 of our Friday night Scouts and 4 Explorer Scouts taking part in the Ten Tors Challenge. We wish Aidan, Josh, Martha, Emily, Isabel and Toby the very best of luck!

Pioneers. 21 Pioneers have now achieved their artist badge. Thanks to Lola, our young leader who organised this for the Pioneers. We have been planning a very active summer term starting with Survival skills on the common organised by a local Royal Marine, Ben. This hasn't actually happened at the time of writing, but when he last did this 2 years ago it was a fantastic evening. We will have also participated in the village litter pick and learnt about recognising fake news on the internet, a very important skill for this day and age. At our St Georges Day Parade I was really pleased to present Emily, Martha and Isobel with their Chief Scouts Gold Award. An amazing achievement. Well done girls.

**Please join us at our next Coffee, Tea and cake event on
Saturday 2 May 2026 at the Hub from 1.30 to 4 p.m.**

For more information e-mail ipplepen@teignbridgescouts.co.uk



A.J. GIBBONS FUEL MERCHANT

– 01626 834449 –

SOLID SMOKELESS FUELS

BOTTLED GAS

KINDLING - KILNED DRY LOGS

CHIMNEY SWEEPING

*Our kiln dried logs are locally sourced and
kilned in-house, providing a cleaner and*

more efficient burn

Prompt delivery on all fuels



Unit 2, Blue Waters Ind Est., Pottery Road,
Bovey Tracey. TQ13 9YF

A.S. MOTORS

(DEVON) LTD



- MOTs
- SERVICING
- WELDING
- BREAKDOWN & RECOVERY
- CARS AND COMMERCIAL
- ALL MAKES OF VEHICLES

Unit 8, Ruby Farm,
Abbotskerswell, Newton Abbot
TQ12 5NQ

07525 394937

We run a pickup and collection service

IPPLEPEN VILLAGE HALL - AGM

Phil retires after 40 years at the Village Hall

As I am sure you are all aware, the AGM of the Village Hall took place on the 18th of March. It was well attended, and the usual officers' reports were given. At this time, Philip (Chairman) and Sharron (Treasurer) tendered their resignations, leading to the Village Hall having a new Chair, Secretary, Treasurer, and Assistant Treasurer, with Peter continuing to fulfil the Booking Officer's role.

Sharron has done a sterling job of looking after the finances, and much more, since Keith Bennet handed over the reins four years ago.

Phil has been a member of the Village Hall for approximately 40 years and Chairman for 30 of those years. During this time, he has guided the hall through many improvements, including football club showers and changing rooms, a new side hall, new windows, a tarmac surface to the car park, improved toilets, a side hall extension, and upgraded kitchen facilities.

I am sure you will join me in thanking both Phil and Sharron for their hard work and dedication to the hall and the village. Without the voluntary work put in by the committee, the village would not have such a great venue for all types of occasions.

With kind regards and best wishes.

Rob Vallance





**Our friendly community shop
has been run by volunteers for 16 years!**

Everyday items

Gifts and cards

Coffee shop with homemade cakes

Hot and cold savoury snacks

Post Office services

We are open:

Shop: Mon - Fri 8.30am to 6pm. Sat 9am to 1pm. 01803 813347

Post Office: Mon - Fri 9am to 1pm Sat 9am to 12pm 01803 814335

www.broadhempstonshop.co.uk

broadcomshop@gmail.com