

March 2026

# The Ipplepen Magazine



News and events around the Parish

**Peter Tomkinson**  
***Electrical Contractor***

**EV charging points - Inspection and testing - PAT**  
**From an additional socket to a rewire**



**01803 812444 or 07779 249486**

**mail@petertomkinson.co.uk**



**CONSERVATORIES    KITCHENS**  
**WINDOWS            BATHROOMS**  
**DOORS                GARAGE DOORS**  
**PORCHES             HOME IMPROVEMENTS**

**over 25 years experience installing... PVC-U ALUMINIUM HARDWOOD**

**Please call for a FREE no obligation quotation...**

**M: 07855 355853    T: 01626 201911**

**Moor to Shore Dog Walking Services**

**Ipplepen based dog walker, also covering Abbotskerswell, Ogwell and Denbury, for group walks.**

**Contact Kim on 07762 912 772**



**R C N**  
**T R E E W O R K S**



**T R E E   S U R G E R Y**

**FOR ALL YOUR TREE SURGERY NEEDS**

**TEL: 07496690271**

**EMAIL: RCNTREEWORKS@GMAIL.COM**

# The Ipplepen Magazine

## Editor:

Trevor Ashford  
6 Caunters Close, Ipplepen  
[trevorashford321@gmail.com](mailto:trevorashford321@gmail.com)

## Adverts/Treasurer:

Kathy Langabeer  
[kathylangabeer@gmail.com](mailto:kathylangabeer@gmail.com)  
To advertise in *The Ipplepen Magazine* please call 07925 115709

## Distribution:

Barbara Hawksby-Calland  
[b.ipplepen@btinternet.com](mailto:b.ipplepen@btinternet.com)

The magazine is also  
available online.

[www.ipplepenmagazine.com](http://www.ipplepenmagazine.com)

**Copy deadline for  
next month's issue  
15<sup>th</sup> March, 2026**

*The Ipplepen Magazine* is produced each month and 1,350 copies are distributed free of charge to every household and business in the Parish.

Clerk to Ipplepen Parish Council	813250
Ipp Church Hall	<a href="mailto:p.emmerson@live.co.uk">p.emmerson@live.co.uk</a>
Ipplepen Village Hall (booking)	813906
Teignbridge District Council	01626 361101
Devon County Council	0845 155 1015
Devon County Council (Roads and Transport)	0845 155 1004
Ipplepen Health Centre	874450
Ipplepen Primary School	812226
Saplings (Pre-school and before/after school clubs)	812466
Newton Abbot Hospital	01626 324500
Torbay Hospital (Switchboard/ general enquiries)	614567
NHS Direct (24 hours)	111
Police – non-urgent calls (24 hrs)	101
Electricity (24 hour emergency service)	0800 365 900
Gas (24 hour emergency service)	0800 111 999
Water (24 hour service)	0800 230 0561
<a href="mailto:Martin.Wrigley.MP@Parliament.uk">Martin.Wrigley.MP@Parliament.uk</a>	
Ipplepen Hub	01803 814100

## IPPLEPEN MEMORY CAFE

17th March, 2026 2.00-3.30PM

St Andrews Church Hall

Theme- Music with Brian.

Coordinator David Garland 07342884432

Secretary Rose Debenham 01803 813458 Or  
07549827620

If you wish to attend please contact the above persons.

Date of next meeting 21st April



## IPPLEPEN TENNIS CLUB

Annual General Meeting

Will be held at the Church Hall

Paternoster Lane, Ipplepen

on

Wednesday 20th March at 7pm

All are very welcome

## Melvin Carter

Doreen and her family would like to say a big Thank-You to the wonderful neighbours who have given their support and offers of help following the sad passing of Melvin. Also a sincere Thank-You to the many friends for the lovely cards to comfort us in our loss. He will be greatly missed.

*Sheila Lord*

## Margaret Bartlett

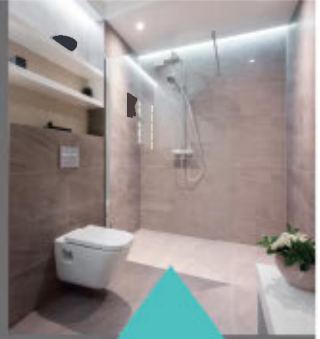
A big thank you to Ipplepen Hub for their kindness, looking after me, after my knee operation.

Lauren for the meals, also who did so much else for me. Isabel for delivering the meals (in all that wet weather). Margaret Pedrick driving me to Mount Stuart Hospital plus other places.

And for all the lovely cards I received.



# SHOWER IN LUXURY, COMFORT AND EASE



Are you struggling to bathe or get out of the bath?

Why not step into a brand new walk-in shower with ease.

Our expert installers will convert your bathroom into a modern, luxury bathroom. Built to suit your needs, once again making bathing safe and pleasurable. With over 25 years of specialist experience, we will personally oversee every aspect, from design to installation.

A BATH  
TO SHOWER  
IN 48HRS

 **ABILITY BATHE**  
Specialists in Bathrooms

Request your free quotation today!

Visit [www.abilitybathe.co.uk](http://www.abilitybathe.co.uk)

or call 01803 814309

Est

**RENDELLS**

1816

[www.rendells.co.uk](http://www.rendells.co.uk)

Chartered Surveyors - Estate Agents - Letting Agents - Land Agents - Commercial Agents -  
Livestock Specialists - Fine Art - Smallholders Markets - Farm & Machinery Sales -  
Valuers - Auctioneers



**Newton Abbot Office**

13 Market Street, Newton Abbot, Devon, TQ12 2RL

Tel: 01626 353881

Email: [newtonabbot@rendells.co.uk](mailto:newtonabbot@rendells.co.uk)

Ipplepen

# VILLAGE CINEMA

Ipplepen Village Cinema *Presents*



BASED ON THE REMARKABLE TRUE STORY

## I SWEAR

2025 | Cert 15 | 2h

Director: Kirk Jones

7.30pm, Wednesday, 11th March

A dark comedy following John Davidson: diagnosed with Tourette's syndrome at a young age which alienated him from his peers, he struggled with a condition few people had witnessed. (IMDb)



### IPPLEPEN VILLAGE HALL

Doors open at 6.45pm

Tickets on the door: Adult £4.00 (members £3.00), Child (under 15): £2.00

Raffle, Refreshments | Soft Drinks, Wine, Beer, Tea/Coffee, Ice Cream, Snacks

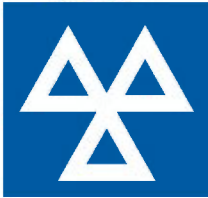




# RED POST GARAGE

Est: 1896

CLASS 4



-  Local, friendly family run business
-  Fully trained technicians
-  Diagnostics
-  All types of vehicle repair work undertaken
-  MOTs on cars, vans, 4x4s and campers up to 5000kg
-  12 month warranty on all parts and labour
-  Digital Service History upload available on many makes
-  Courtesy cars available on request



Tel 01803 812389

Email [mail@redpostgarage.co.uk](mailto:mail@redpostgarage.co.uk)

Web [www.redpostgarage.co.uk](http://www.redpostgarage.co.uk)

Open Mon-Fri 8am-5.30pm Closed Sat/Sun

# IPPLEPEN VILLAGE GARDEN SHOW 18th July 2026



We are now in the throes of organising the Village Show and this is a reminder as to how you can play your part!

I hope the wine is coming on nicely, the categories are very straightforward, Red, White or Rosé. I am sure we will be very impressed by what is produced! The full details of the classes will be revealed nearer the Show date. I will let you know once the categories are live on the website, probably early June.

In the handicraft category, there will be a section for Floral Art. As Spring is now here, I am sure the artists amongst you will be spoilt for inspiration.

If you are part of a Village Group, now is a good time to start planning what you are going to do. The time rushing by at an incredible rate.

We have a great team of volunteers and are always looking for more. I know you all have busy lives but it is just Show day and Sunday Morning where help is needed. Please get in contact, details below.

Put the date in your calendars now. 18th July 2026.

Karen Careswell Show Chairman 01803 813566

[Chairman@ipplepenvillageshow.co.uk](mailto:Chairman@ipplepenvillageshow.co.uk)

## *A reminder of some of the photographic categories*

Adults:- Autumn splendour, a photograph showing the change in seasons from Summer to Autumn.

In the deep midwinter; a photograph depicting a Christmas or deep winter scenery or view

Children:- The colours of Autumn, a photograph showing the colours of the season.



SCAN FOR TICKETS



# 10TH ANNIVERSARY CONCERT

A DECADE OF SONG AND COMMUNITY

RAFFLE | BAR | DISCO AFTERWARDS

MARCH 27<sup>TH</sup> 2026 | 7:30PM

DOORS OPENING AT 6:45

AT KEVICC ARIEL THEATRE

ASHBURTON RD, TOTNES, TQ9 5JX

TICKETS: £10 / £5 CHILDREN

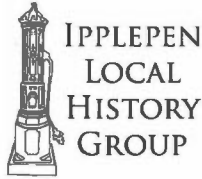
EARLY BIRD - 20% OFF ALL TICKETS BEFORE FEB 22ND

TICKETS AVAILABLE AT THE LINK BELOW

[WWW.TICKETSOURCE.CO.UK/UNITY-IN-SOUND-COMMUNITY-CHOIR](http://WWW.TICKETSOURCE.CO.UK/UNITY-IN-SOUND-COMMUNITY-CHOIR)

ALL PROFITS WILL BE SHARED BETWEEN DEVON AIR AMBULANCE AND  
ROWCROFT HOSPICE

[www.unityinsound.co.uk](http://www.unityinsound.co.uk)



**The Local History Group welcome everyone  
to a coffee morning at  
The Village Hall, Saturday March 21<sup>st</sup> 2026,  
10.00am to 12.30 pm**



**Raffle, stalls and refreshments – raising money  
to preserve the local history archive and to  
support MND and local wildlife protection  
groups.**

**Slideshow of archive photos of Ipplepen's  
sports teams. Spot the 1970s mullet haircuts!**



Friendly and reliable garden and property maintenance services in Ipplepen and the surrounding area



Gardens & Outdoor Spaces



Interior & Exterior Painting



General Maintenance

07730 047190

info@elmsideservices.co.uk

www.elmsideservices.co.uk



EST. 1992  
**REDPOST**  
≡ EQUESTRIAN, PET & COUNTRY LIVING ≡

**VISIT THE STABLE CAFÉ**  
BREAKFASTS, LUNCHES, LITE BITES,  
DELICIOUS BAKES & TASTY TREATS  
ALL FRESHLY PREPARED



FEED & BEDDING | TACK | FOOTWEAR | COUNTRY & EQUESTRIAN WEAR

**STORE & CAFÉ OPEN 7 DAYS A WEEK**

LILLISFORD STUD, LITTLEHEMPSTON, TOTNES, DEVON, TQ9 6NG

**WWW.REDPOSTEQUESTRIAN.CO.UK**



ALL YOUR HAIR AND BEAUTY NEEDS TAKEN CARE OF  
IN THE PEACEFUL TRANQUILITY OF THE DEVON  
COUNTRYSIDE.

Luxury Hair & Beauty in a Beautiful Countryside  
Setting.

With over 34 years of professional experience, I  
offer a bespoke, one-to-one salon experience from  
my private countryside studio.

Designed for those who value quality, calm  
surroundings and personal attention, every  
appointment is tailored entirely to you. From  
precision cutting and beautiful colour work to  
expert beauty treatments, my focus is always on  
enhancing your natural style with care and  
attention to detail.

I pride myself on creating a welcoming, relaxed  
environment where you feel completely at ease,  
unhurried, listened to, and beautifully looked after.

- ✦ Private, one-to-one appointments
- ✦ All hair & beauty services available
  - ✦ Easy, free parking
  - ✦ Peaceful rural setting

Escape the busy high street and enjoy a refined  
salon experience with space to unwind.

Please drop me a message on WhatsApp or text and  
we can get you booked in!

☎ 07747805647

📍 Combefishacre, Near Ipplepen



A reliable family business

And an electrician  
you can trust.

[www.g-elec.co.uk](http://www.g-elec.co.uk)

Your local electrician



## Foot Health Care Professional



Nicky Quant MCFHP MAFHP

*Foot health care in the comfort of your own home*



- Toe Nail Cutting
- Callous/Hard Skin Removal
- Problem Corns

For a friendly, professional service call to make an appointment

**Mobile: 07787 573397**



Stonelands Bed & Breakfast,  
Causeway Cross, Ipplepen, TQ12 5TB  
01803 812217 / 07795281123  
[sue.slade1963@gmail.com](mailto:sue.slade1963@gmail.com)  
[www.stonelandsbedandbreakfast.co.uk](http://www.stonelandsbedandbreakfast.co.uk)



Located on the edge of Ipplepen village, Stonelands B&B is the perfect base to explore all that South Devon has to offer. The property has recently been extended and modernised throughout, including three guest bedrooms, each with an en-suite and plenty of natural daylight.

Our special Stonelands breakfasts are freshly prepared, consisting of tasty local produce which will set you up for a day of exploring. We have ample free parking available directly outside the house. We look forward to welcoming you in the near future!

Peter & Sue Slade





# Walking on Sunshine

Devonly Voices & The Singers Upstairs

Come and join us for a  
joyful evening of acappella harmony

## Friday March 27th

7.30pm

## Ipplepen Village Hall

All proceeds to local charity **THE HUB**

£12 on door (open 7pm)

Under 16s free / donation

Refreshments available

Enquiries: Vicky 01803 866300 / [vickyhadland@hotmail.com](mailto:vickyhadland@hotmail.com) / [www.devonlyvoices.co.uk](http://www.devonlyvoices.co.uk)



**CAFE - LIBRARY - EVENT HIRE - TODDLER TIME - GRIEF CAFE - CRAFT GROUPS**



**The Hub is open Tuesdays, Wednesdays and Thursdays 10am – 4pm.**

We offer hot home-cooked lunches every Tuesday and Thursday, with bacon rolls on Wednesdays, and jacket potatoes and toasties at all times. The lunch menu is posted on Spotted Ipplepen on Facebook each week.

We have an impressive well-stocked library, with DVDs and jigsaws too. The computer has a guest logon, and you can use our printer and colour photocopier for a minimal charge.

Our Toddler group has moved to the huge back room from 9am on Thursdays, so our customers have more room and a bit more quiet, in the main hall. We have a ramp for buggies, and baby-changing facilities.

Upcoming free events, open to everyone, with no booking required:

- Wed. 11<sup>th</sup> March from 10.30am – Digital Drop-in – hosted by Mark.
- Wed. 11<sup>th</sup> March from 2pm – The Grief Café – hosted by Cathy.

In order to staff our busy café and library, **we need volunteers**. We work in shifts, so typically you'd do either 10am-1pm or 1-4pm.

We now have 3 rooms to hire outside normal opening hours for activities and clubs. Please contact Steve Major on 07784 719514 for pricing and availability.



Scan for news & events.

**01803 814100**

*We Are Always Looking for*  
**VOLUNTEERS** 

**ich.org.uk**

25<sup>th</sup> March 2026 at 7.30pm  
Ipplepen Village Hall

**Stella Exley  
Camassia, Chris, Chelsea  
and Chaos!**



Stella is a hardy-plant nurserywoman based in the South Hams who regularly exhibits in Floral Marquees at all the major shows. She is the proud holder of three National Plant Collections - Camassia, Sidalcea and Uvularia.

**Raffle and Refreshments**

**'Grown in your Garden' competition**

**Everyone welcome!**

**Members £3 Non members £4**

Sally Nex came to speak to us about Heritage Vegetables. This is the term given to older varieties, a few from as far back as Tudor times, some from Queen Victoria's reign, when gardening became very popular, and some from the first half of the 20<sup>th</sup> century. Growers wanted to show off their produce, so horticultural shows, like our village one, began.

Some heritage varieties have very quirky names, for example Pink Fir Apple Potato, Drunken Woman Lettuce and Sheep Nose Apple. Emphasis in the past was on flavour and texture, whereas now the supermarkets concentrate on uniform size and appearance. This of course makes heritage vegetables very attractive to gardeners, who are more interested in what their produce tastes like than whether each onion, for example, is the same size. Several specialist companies have sprung up to sell seeds of heritage varieties to the public.



## Indoor Secure Self Storage Units

OLD CIDER WORKS ABBOTSKERSWELL

- Accessible 24 Hours 7 Days a Week
- Automated Access
- Flexible Contract
- Variety of Sizes to Choose From
- Ground Floor Units Available
- Simple Online Booking System
- Safe and Secure with Individually Alarmed Units
- Deliveries accepted on your behalf (Weekday working hours only)



### SERVICED OFFICES ALSO AVAILABLE

Please contact Louise for further information

[info@storewell.uk](mailto:info@storewell.uk) 07887995458

[www.storewell.uk](http://www.storewell.uk)



### *Chartered Structural Engineer*

Design and detailing for all new build projects, calculations for house extensions, structural surveys and barn conversions.

#### Contact

Nick Kitchen on

07814 794161 or email

[npk@opusengineeringltd.co.uk](mailto:npk@opusengineeringltd.co.uk)

[INFO@SDPAB.CO.UK](mailto:INFO@SDPAB.CO.UK) ● 07966504888 ● [WWW.SDPAB.CO.UK](http://WWW.SDPAB.CO.UK)

# SAM DAVIES

## BUILDING LTD

EXTENSIONS | REFURBISHMENTS

NEW BUILDS | CONVERSIONS

ALTERATIONS | CARPENTRY

PLASTERING | RENDERING

BATHROOMS | KITCHENS | TILING



[SDPAB\\_LTD](https://www.instagram.com/SDPAB_LTD)



[SAMDAVIESBUILDINGLTD](https://www.facebook.com/SAMDAVIESBUILDINGLTD)

Based in Dainton, Ipplepen



**Oil / Gas / Solid Fuel / Biomass /  
Wood Burner / Solar Thermal / Heat Pumps  
Custom / Bespoke Systems using  
Multi Fuels Thermal Stores.**

**Grant G 1 + Oil Boiler installers  
with a 10-year warranty on the boiler.**

**Design | Supply | Installation  
Maintain | Service - Breakdowns**

(Installing Heating & Hot Water Systems/Boilers since 1976)

**Call: 01803 812090 or 07970 047518**

**email: [tony@safeheattorbay.uk](mailto:tony@safeheattorbay.uk)**

**[www.safeheattorbay.uk](http://www.safeheattorbay.uk)**



10985



2474

**City & Guilds**



**WE ARE NOT JUST A TIMBER MERCHANT  
WE ARE MUCH, MUCH MORE!  
NOW STOCKING:**

- **BULK & SMALL BAGS  
OF AGGREGATE**
- **AGRICULTURAL  
FENCING**
- **PORCELAIN SLABS  
SANDSTONE SLABS &  
PATIO PACKS**

**ANY PROJECT BIG  
OR SMALL,  
SOUTHERN TIMBER  
HAS IT ALL!**

**CALL US TODAY ON  
01803 813 803**



- Patios
- Driveways
- Fencing
- Turfing
- Composite/wood decking
- Full garden renovations



**DS LANDSCAPING**  
& driveways

07896154086

[dale.dslandscaping@hotmail.com](mailto:dale.dslandscaping@hotmail.com)

Come and see the display of stunning nature inspired banners in St. Andrew's Church.

Can religion & science co-exist? Come and see....

# GOD SAW THAT IT WAS GOOD'

**Saturday 14<sup>th</sup> March**  
**Ipplepen Village Hall**

## 'GLIMPING THE SACRED IN CREATION'

An evening exploring wonder, science and our relationship with the natural world, with Rev. Dr. David Gregory.

Doors open at 7pm - Talk from 7.30pm.  
Refreshments available.

Free event but booking essential: [office@beaconparishes.co.uk](mailto:office@beaconparishes.co.uk)

**Sunday 15<sup>th</sup> March**

Guest preacher, Rev. Dr. David Gregory, at the 11.00am church service

then at the church hall and field.....

## DR. DAVE GOES WILD WITH ST. ANDREW'S OUTSIDE!

A family-friendly event with fun, hands on, experiments led by Rev. Dr. David Gregory - plus a Mothering Sunday tea!

3pm-4.30pm



# Your Home from Home in Toplepen

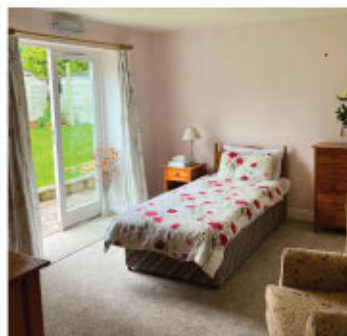
## The Grange Residential Care Home

Nestled in beautiful countryside, our CQC-rated 'Good' home offers more than just stunning surroundings. Here, you'll find a family of residents and carers who'll become your second family. Home-cooked meals, engaging activities and 24-hour care from staff you can trust.



## North Grange Supported Living

For those cherishing independence, our supported living home is your perfect sanctuary. Maintain your lifestyle with the reassurance of 24/7 staff presence. Share home-cooked meals with friends or relax in our cosy communal areas – just like you would at home.



Ready to find your new home?  
Call us on **07704 573281** to arrange a visit!  
[www.southdevoncareservices.com](http://www.southdevoncareservices.com)





# The Church In Ipplepen



## What is special about 6<sup>th</sup> March 2026?

It might be your birthday, or it could be the date of any number of interesting anniversaries. This year it falls on the first Friday of March and that is significant because it celebrates **World Day of Prayer**.

The uniqueness of the day is that some 170 countries around the world mark it with ecumenical worship and prayer. These celebrations start in Samoa and countries follow through as the day progresses all the way around the world.

The origin of the event goes back to the 19<sup>th</sup> century when Christians in the US and Canada initiated a variety of cooperative activities in support of women's involvement at home and in other parts of the world.

As it evolved, a different country planned the celebrations each year. Women from participating denominations of the leading country for that year put material together for a common act of worship to be used around the world.

Because it fell to groups of women to plan the worship, supporting resources enabled the world to learn about that country, its culture and its problems; practical information about life for ordinary families. Women in the different countries created ways to work together for mission, enabling social issues to be addressed.

This year, Nigeria has planned the resources. The country demonstrates an enduring capacity for renewal, adapting to new realities while holding onto the dream of a united, prosperous, and peaceful nation.

This year's theme is Matthew 11 v 28 where Jesus says 'Come to me, all who labour and are heavy laden, and I will give you rest'

Working together is never a bad thing and prayer, whether offered as an individual or by a group has its own power.

Hopefully we can re-establish our own united celebrations for World Day of Prayer next year! If you are interested to help plan this, please let me know!

Maria Alsop, Church Steward, Ipplepen Methodist Church

## St Andrew's Church, Ipplepen

### Contact us

Rector:	Reverend Andrew Down	813403
The Church Office:	Mrs. Alice Blanchard	814178
St Andrew's Church Wardens:	Mrs. Sue Hird 813386	Mr. Clive Tompkins 07704 919994
St Andrew's Church Hall Hire:	Pauline Emmerson	p.emmerson@live.co.uk

### March 2026 – Services

#### Sunday 1<sup>st</sup> March – The Second Sunday of Lent

Time	Service	Location
09.00am	Holy Communion	Denbury
11.00am	Holy Communion + Children's Activities	Ipplepen
5.00pm	Encounters – New Service	Ipplepen Methodist Church

#### Sunday 8<sup>th</sup> March – The Third Sunday of Lent

Time	Service	Location
09.00am	Holy Communion + Children's Craft Table	Broadhempston
11.00am	Holy Communion	Ipplepen
5.00pm	Evening Prayer + Benediction	Denbury

#### Sunday 15<sup>th</sup> March – The Fourth Sunday of Lent

Time	Service	Location
09.00am	Holy Communion + Children's Activities	Denbury
11.00am	Holy Communion + Children's Activities	Ipplepen
3-4.30pm	Dr. Dave Goes Wild with St. Andrew's Outside + Mothering Sunday Tea	Ipplepen Church Hall and Field

#### Sunday 22<sup>nd</sup> March – The Fifth Sunday of Lent

Time	Service	Location
09.00am	Holy Communion	Woodland
11.00am	Holy Communion	Ipplepen
5.00pm	Reflective/Taize Evening Worship	Broadhempston

#### Sunday 29<sup>th</sup> March – Palm Sunday

Time	Service	Location
11.00am	Holy Communion + Dramatised Reading of The Passion	Woodland



# St Andrew's Church, Ipplepen

[www.missioncommunity.org.uk](http://www.missioncommunity.org.uk) 01803 814178

[office@beaconparishes.co.uk](mailto:office@beaconparishes.co.uk)

[www.facebook.com/StAndrewsIpplepen](http://www.facebook.com/StAndrewsIpplepen)

**Coffee & Chat!**  
 ST. ANDREW'S CHURCH  
 SATURDAY 14<sup>TH</sup> MARCH  
 10.30AM - 12 NOON

HELD ON THE SECOND SATURDAY OF EVERY MONTH.

A warm welcome awaits you. There is no charge but donations are gratefully received.

Children and dogs on leads are welcome.

**Lent Quiet Day**  
 Woodland Parish Rooms  
 Saturday 21<sup>st</sup> March  
 10am - 1pm

For more information or to sign up please email: [office@beaconparishes.co.uk](mailto:office@beaconparishes.co.uk) or add your name to the list in each church.

LOOKING TO HIRE SOMEWHERE FOR AN EVENT OR CLUB?  
**ST. ANDREW'S CHURCH HALL IS AVAILABLE!**  
 SEATING FOR 60, STANDING FOR 100  
 FULLY EQUIPPED KITCHEN  
 LIGHT & SOUND  
 AFFORDABLE  
 GREAT!  
 WWW

EMAIL: [FOOD@SVAOLIVE.CO.UK](mailto:FOOD@SVAOLIVE.CO.UK)

## March 2026 – Additional Events

Date	Time	Event	Location
Saturday 7 <sup>th</sup> March (1 <sup>st</sup> Saturday of each month)	10am – 12 noon	Coffee Morning	The Parish Rooms, Woodland
Wednesday 4 <sup>th</sup> March (1 <sup>st</sup> Wednesday of each month)	12 noon	Food for Thought Lunch Club	Church Hall, Ipplepen
Thursday 12 <sup>th</sup> March (2 <sup>nd</sup> Thursday of each month)	10.30am	Coffee Mates	Church Cottage, Denbury
Saturday 14 <sup>th</sup> March (2 <sup>nd</sup> Saturday of each month)	10am – 12 noon	Coffee & Chat!	St. Andrew's Church, Ipplepen

### Special Occasions marked with floodlighting of the church tower

- 1<sup>st</sup> – 7<sup>th</sup> Mar From Val and Peter Sleight remembering her parents, Phyl and Peter Monks, at the time of their birthdays. From David, Linda, and Katie Simmonds for Hannah's birthday on 5<sup>th</sup> March
- 8<sup>th</sup> – 14<sup>th</sup> Mar For Grace Domoney who sadly passed away in January 2022. Remembering our Mum on what would have been her birthday on 9<sup>th</sup> March. Phil, Wendy and family  
 In loving memory of Margaret Kemp on her birthday on 9<sup>th</sup> March, with love Sheila and Graham Needs and family.  
 From Nick Wildgoose in memory of his dear mother Pat on her birthday.
- 15<sup>th</sup> – 21<sup>st</sup> Mar Thursday 16<sup>th</sup> March - in loving memory of Rex Osborn, with the Hooker and Osborn families  
 In loving memory of a special dad, Grampy and husband, Peter Quick on 17<sup>th</sup> March which would have been his birthday and who is greatly missed.
- 29<sup>th</sup> Mar - 4<sup>th</sup> Apr Remembered with love Iris and Peter Moore on your anniversary. The Moore family xx  
 In memory of Geoffrey Williamson, on the occasion of his birthday on 29<sup>th</sup> March. He is missed so much and with us always.

Sponsor forms are available in St. Andrew's and at [www.missioncommunity.org.uk/floodlighting](http://www.missioncommunity.org.uk/floodlighting)



- Or email: [ippleflood@beaconparishes.co.uk](mailto:ippleflood@beaconparishes.co.uk)
- Donations can be made by cash, cheque, BACS, via [www.iustaiving.com/fundraising/ippleflood](http://www.iustaiving.com/fundraising/ippleflood) or via the QR code



# IPPLEPEN METHODIST CHURCH

## Preachers for March



1 <sup>st</sup>	10.30	Mrs Pengelly
	5pm	Encounters - Informal, reflective worship
8 <sup>th</sup>	9.30	Family Breakfast Church
		Informal church with children in mind – Sara Crouch
15 <sup>th</sup>	10.30	Rev Vincent Canning Communion Service
22 <sup>nd</sup>	10.30	Local Arrangement
29 <sup>th</sup>	10.30	Miss Sara Crouch

*Mondays March 2<sup>nd</sup>, 9<sup>th</sup> & 16<sup>th</sup> at 6.30pm*

*continuation of A Lent Journey -  
Landscapes of Penance, Peace and  
Reconciliation*

**All are welcome to any of these services**

Local Lay Pastor: Miss Sara Crouch 07845 278253

Contact for Senior Steward: 01803 813110

Teignbridge Circuit Superintendent: Rev Kevin Hooke 07772 571647

Lettings Secretary: Mr Steve Major 07784 719514



# MALLANDS CARE

## “Professional Care with a personal touch”

Mallands is a friendly, caring family run residential care home providing high quality care with a personal touch.

We provide a range of services including

- Residential Care
- Respite Care
- Day Care
- Meals at home

**Contact us on**

**01626 366244**

**Email : [enquiries@mallands.co.uk](mailto:enquiries@mallands.co.uk)**

**[www.mallands.co.uk](http://www.mallands.co.uk)**



Our mission is to provide a safe and caring environment for residents, who can maintain their independence and a lifestyle that is as close to that as they might expect at home, with the peace of mind that there is always someone there for them to provide assistance when required.

**We offer day care to individuals to provide social interaction and to join in our activities. It also gives our visitors opportunity to use our services and facilities, such as chiropodist, hairdresser and our bathing facilities. We can provide transport for those in the local area.**

For people living locally, we can provide hot nutritious meals delivered to your home Monday-Friday. Individual dietary needs and preferences will be taken into account, with individuals having the opportunity to choose from the day's menu by 9:30am.

**Mallands Residential Care Home, Odle Hill, Abbotskerswell, TQ12 5NL**



We are a family firm now in its second generation that has been manufacturing and installing high quality kitchens & bedrooms for over 35 years.

**01626 333600**

**[www.booth-kitchens.co.uk](http://www.booth-kitchens.co.uk)**

Peter Booth Kitchens Ltd.  
The Old Cider Works, Manor Road, Abbotskerswell,  
Newton Abbot, Devon TQ12 5NF

# IPPLEPEN CONSERVATIVE CLUB

New members, non-members and affiliate members always welcome



**DARTS**

WEEKLY MEAT DRAW, QUIZ NIGHTS  
AND REGULAR ENTERTAINMENT

ALL MAJOR SPORTING EVENTS  
SHOWN ON OUR BIG SCREEN IN OUR  
FUNCTION ROOM & BAR

COMPETITIVE DRINKS PRICES

*We look forward to welcoming you soon!*



**POOL**



**SPORTS**



Monday - Thursday: 5pm - 11pm | Friday: 4pm - 11pm | Saturday: Noon - 11pm | Sunday: 1.30pm - 10.30pm



**FORE STREET • IPPLEPEN • 01803 812823**

# IPPLEPEN BOWLING CLUB WHIST DRIVE

At our February Whist Drive, as MC, I gave the very sad news of the death of our friend Walter Gooding. Walt had enjoyed his Whist with us over many years until recently when his health issues had prevented him from joining us. I asked everyone present to carry their memories of Walt during the afternoon, and that we will always remember the fun times we had with him. Our condolences are sent to Rose and their family.

We were sorry to hear that our regular player Cath Spiers had been ill and wish her a speedy recovery back to good health again. In the meantime we know that Phill will be looking after her.

We welcomed five new people for their first game of Whist with us, namely Eunice, Sally, Trevor, Jasmine and John, and we hope they enjoyed the afternoon and will look forward to seeing them again. I cannot thank everyone enough for all the support they give in attending the monthly Whist Drives. It is very rewarding to see everyone laughing and enjoying their game of cards – and even the cheeky little grins that players give when they win a trick, especially if they have “trumped” their opponent’s trick.

The winners this month were as follows: Ladies – 1<sup>st</sup> myself (Shirley Northwood), 2<sup>nd</sup> Joan Preston and 3<sup>rd</sup> Anne Mason. The booby prize was awarded to Jasmine Osmond.

Gents – 1<sup>st</sup> Trevor Moore, 2<sup>nd</sup> Keith White and equal 3<sup>rd</sup> were Keith Dommett and John Osmond. On the cut of the cards Keith won the prize, and so a consolation prize was given to John also. Booby prize was awarded to David Northwood.

So, congratulations to all the prize winners, especially to Trevor, John and Jasmine, who all took home prizes from their first Whist Drive.

Whist Drives are always held on the second Thursday of every month at the Clubhouse, and so a date for your diary of the next Whist is **Thursday 12<sup>th</sup> March. Please note the new start time of 1.30pm.**

Do come along and join us (£3.00 to play to include refreshments at half time plus a raffle is held), you will be made very welcome.

***Shirley Northwood 07711016495***

# IpplePlanet: Gardening for frogs



Spring is here! We were so happy to hear frogs croaking in our Ipplepen garden pond in the first week of February, and even more pleased to find frogspawn appear a couple of days later. We created our garden pond in 2018 and in 2021 frogs turned up by themselves, with frogspawn most years since. They recommend letting plants and animals naturally find the pond; please do not move plants and frogspawn/frogs as this can spread diseases.



When we dug out our garden pond, not much longer than a bathtub, it looked like a round, upturned broad-brim hat with a deep hole in the middle with a shallow area around. This provides a range of depths for aquatic plants and animals, plus hedgehogs can climb out easily. It has a waterproof liner and was filled with rainwater from water butts.



Most amphibians (frogs, toads and newts) only use the pond in spring for breeding and the rest of the year is spent in woodland, gardens, hedgerows and tussocky grassland. They like tall undergrowth where it is damp and can forage for food such as slugs, snails, worms, spiders, flies, beetles and other insects. They are true gardeners' friends!



If you want to make your garden a year-round friendly home for amphibians, leave areas 'no mow' so they can forage in tall vegetation and hide from the summer heat. Many frogs spend winter hibernating underground at the base of a hedge amongst the roots. You can recreate this with a 'hibernaculum' made from a pile of logs, rocks, and soil. Go to Devon Wildlife Trust or

Froglife for the best advice on how to make your own garden pond or hibernaculum. It really is worth all the effort when you see and hear frogs in the spring! If you'd like to get involved with green action in Ipplepen, we'd love to hear from you, please email us at [ippleplanet@hotmail.com](mailto:ippleplanet@hotmail.com). Please pencil in your diary our 'birdsong and bluebells walk' round Orley Common, Saturday 25<sup>th</sup> April, there will be more info in next month's magazine.



*At the time of writing, in mid-February, preparations are well underway for the Choir's 10th anniversary concert on Friday 27th March. The Choir are rehearsing hard to polish our repertoire of old and new songs, including special arrangements to celebrate 10 years of Unity in Sound.*

*The concert is being held in the Ariel Theatre at King Edward VI Community College (KEVICC) Totnes TQ9 5JX. The venue was chosen to provide the additional space and facilities to enable us to make this a really special event to mark this landmark anniversary in style. We are excited to be performing some songs with a live band, as well as enjoying an after-party with friends and family.*

*Tickets are selling fast but there are still a few available on [www.TicketSource.co.uk](http://www.TicketSource.co.uk) - you can use the QR code on the poster elsewhere in this magazine. Entry includes the disco afterwards as well as the concert itself. Do bring some cash or your card on the night, as there will be a bar selling alcohol, soft drinks, snacks and sweets. We will also be selling raffle tickets on the night with some fantastic prizes donated by local businesses and a selection of lovely themed hampers put together by the choir.*

*Profits from the event will benefit two invaluable local charities - Rowcroft Hospice and Devon Air Ambulance - so please do grab some tickets, and tell your friends and family. After all our hard work, we would love to perform to a full house and make lots of money for these good causes.*

# Ipplepen Scout Group



Squirrels. As usual the month has been packed full of good activities for the Squirrels. The weather has not been kind to us so we have been concentrating on doing things indoors.

Beavers. February has been a busy month for the Beavers. We had our own Olympics night with snowball games, doing our ice run on skateboards and having a game of curling. 6 of our Beavers joined other Teignbridge Beavers for a sleepover at Plymouth. We arrived on a Saturday evening had a brief introduction and had our tea. Pizza, chips and corn or chicken nuggets were the choice for us. This was followed by a tour and talk of all the areas the public can access. There was a question and answer time and some scientific challenges for us to think about.

Once we were all ready for bed (10.30) sleeping in front of a large fish tank, we had a Disney film called Luca to watch with ice cream. Lights went out at Midnight and they came back on at 7.00 am went on and we packed up all our kit and headed off for breakfast. After a visit to the gift shop we left at 9.00 am. We all had a very enjoyable time. We have also had a visit from John from the Karate Academy, showing us some of the basic techniques. Every Beaver enjoyed the evening, trying the different moves.

Cubs The Cubs have been working hard learning their knots and lashings and then putting it all into practice with a pioneering project building ballista's. They've also been investigating a balanced diet and other ways of looking after their health including exercise and sleep. We finished off before the half term break with a session on Antarctica and invested our two new Cubs.

Friday Scouts have had a great term so far. The weather hasn't been on our side and we had to postpone our 'chippie challenge'. The planning is all in place and the Scouts helped write the risk assessment so it's all systems go when the weather is more chip friendly! 4 Scouts took part in the Teignbridge District archery competition held in Bovey Tracey, the team were pipped at the post in the last moments and bagged a fantastic 2<sup>nd</sup> place with brilliant skills shown by all. We celebrated Burns night in style with a 3 course supper and were thrilled to be joined by Clint, an Ipplepen resident, who very kindly piped in our Haggis. We made many toasts throughout the evening and substituted the traditional tippie of whisky with Irn Bru. We attempted some Scottish dancing and whilst not altogether successful we had fun in the process! Most recently we had a very wet wide game around Ipplepen, the rain didn't dampen spirits and a good time was had by all.

Pioneers. The District Archery competition went well with one of our teams coming third, just behind Ipplepen Scout team. We had a Pioneer with the 3rd highest personal score in the competition. Well done to everyone taking part. The Artist Badge work is going well with landscapes and book characters having been painted and drawn. Thank you for organising this Lola. After half term we hope to do wide games, but at the time of writing we don't know if the weather will be good to us. 3 Pioneers have started their training for 10 Tors which is a big commitment with training every other weekend and they have now started camping on the moor overnight. Rather them than me!

For more information e-mail [ipplepen@teignbridgescouts.co.uk](mailto:ipplepen@teignbridgescouts.co.uk)

# Nick Courtier

## LOGS - TREE SURGERY

### THE SHED · IPPLEPEN

Mobile 07973 121152

Stuart Phipps

### The Chimney Sweep Company

- Chimney Sweeping/ Supply and install Wood burners and Multifuel Stoves
- Re-lining of Chimneys/ Fitting of Chimney Pots and Cows
- Sweeping Certificate issued/ £5M Liability Insurance
- Based in Ipplepen / HETAS Registered Installer
- HETAS Registered Installer



Contact: 01803814295 or 07729478999 Email: [enquiries@chimneysweepcompany.net](mailto:enquiries@chimneysweepcompany.net)

## Doug Bacchus

### Plumbing & Heating Services



All Types of domestic work undertaken  
Installation & Repairs

- Gas & Oil Installations
- Annual Gas Boiler Services
- Landlord Safety Certificates
- Power Flushing
- Boiler Repairs & Upgrades
- Solar Installations
- Bathroom Installations
- Underfloor Heating
- Unvented Cylinders
- Heating Upgrades

**VISSMANN**

Tel: 01803 813046

Mob: 07966290967

Email: [Dougbacchusplumbing@gmail.com](mailto:Dougbacchusplumbing@gmail.com)

HONEST & RELIABLE (Your locally based installer)

# IPPLEPEN PARISH COUNCIL

Report on Parish Council Meeting held on Tuesday 3<sup>rd</sup> February 2026 for a more detailed report please read the draft minutes (yet to be approved at our next meeting) on our website: [www.ipplepenparishcouncil.gov.uk](http://www.ipplepenparishcouncil.gov.uk)

## **CORRESPONDENCE:**

a) Teignbridge District Council have written to the Parish Council about the Community Right to Bid for the Co-op, Fore Street, Ipplepen. They have informed the Parish Council as a Nominating Organisation that the five year registration under the Community Right to Bid Scheme has expired. A request has been made of the Land Registry to remove the restriction from the title deeds.

b) An email has been received from the public asking whether the Parish Council can make contact with the developers of Channings Wood (Kier) regarding the regular, illegal and uncontrolled use of Totnes Road and Foredown Road as an extension to the traffic management scheme by Two Mile Oak. On many occasions large quarry lorries have been parked along Totes Road and even at the top of Foredown Road waiting to progress via Two Mile Oak through the traffic management scheme. It is usually between 7.30am and 8.00am at rush hour, and the lorries completely obscure visibility exiting Moor Road and joining the Totnes Road. Action – Clerk to email DCC and Kier.

c) DALC email regarding nominations for the Royal Garden Party on Friday 8<sup>th</sup> May 2026 at Buckingham Palace. Action – Coun.Rattlidge would like to be nominated.

d) Teignbridge District Council have received the report on the draft TDC Community Infrastructure Levy Charging Schedule. If you would like a copy, please contact the Parish Clerk or visit the following link [Community Infrastructure Levy \(CIL\) Examination - Core Submission Documents - Teignbridge District Council](#)

## **OUTSIDE BODIES**

Coun.Mrs.Calland along with two other Councillors attended the Village Hall Committee meeting. The Parish Council offered their support should they need it. The Committee are looking at filling the position of Secretary and Treasurer in due course.

## **AMENITIES:** - Coun.Carnell

The Minutes of the Amenities meeting held on 13<sup>th</sup> January 2026, were approved and taken as read.

a) Gritting – update- Coun.Ranjit unavailable for comment/confirmation. To be followed up at next meeting.b) New grit store- Coun.Carnell advised new Grit store required as existing requires replacement. Coun.Palethorpe proposed that we start to get quotes to replace the store.

c) Toilet Heaters – update- Coun.Carnell advised that heaters have been repaired.

d) New toilet cleaner – New cleaner has started contract. No issues that we are aware of to date.

e) Old toilet cleaner - letter/flowers. Coun.Carnell has sent a letter and flowers to the previous cleaner as a gesture of gratitude for work carried out.

f) Park toilets redecoration- Coun.Carnell advised that internal decorating is required.

- The potential installation of half tiling was discussed as a low maintenance option going forward or PVC Cladding.
  - Improved quality of paint required due to high levels of condensation in the building.
  - Quotations to be obtained in Spring.
- g) Bowling Club hedge – Coun.Carnell has advised that he is unsure if hedging works have been carried out as yet. Coun.Burnham will enquire/investigate and contact Bowling Club Secretary for confirmation.
- h) Coun.Carnell raised proposal for the transplanting of trees from allotment tree nursery before they become too established.
- i) The light has been on at the back of the store room at the Recreation Ground toilets. Coun.Carnell has contacted the electrician to look at the PIR.
- j) Coun.Palethorpe wanted to say ‘thank you’ to the Grounds Maintenance Contractor for dealing with keeping the flooded areas around the village as clear as possible.
- k) DCC Urban Grass Cutting Agreement - signing of DCC Grass cutting contract 26/27. It was agreed unanimously that the contract be signed and returned to DCC.

#### **SKATE PARK** – Coun.Rattlidge

The Parish Borrowing application has been resubmitted and we are now waiting for a response.

Maverick have sent over a proof of the skatepark safety sign for the Parish Council’s consideration. Coun.Mrs.Calland mentioned about electric scooters not being on the safety sign. Action – Clerk to speak to Maverick.

Coun.Smith and Coun.Burnham will look at the access track to the skatepark and discuss with Maverick.

#### **KERSWELLA CARE** – Coun.Rattlidge

No Report received this month, further update in March.

#### **HIGHWAYS & RIGHTS OF WAY**

a) The Minutes of the Highways meeting held on Wednesday 21<sup>st</sup> January 2026, were approved and taken as read.

b) One complaint has been received regarding potholes.

c) Urban Speed Limiters - It was suggested to obtain prices for additional posts at locations around the village to mount the existing VAS unit. We will be trying to find a local supplier to obtain prices for additional VAS units and software so we could fix them on new poles permanently rather than move them around the village.

d) Public Rights of Way - We now have the P3 forms from Devon County so we can carry out inspections which will be carried out in March when, hopefully, the ground conditions and weather have improved. Members of the public can now report a public rights of way problem to Devon County through the online portal themselves.

e) The Parish Council are in the process of obtaining permission to install a new bus shelter on the A381 opposite Foredown road heading towards Totnes. A quote has been received. RESOLUTION – Coun.Palethorpe proposed to accept the quote from Ace Shelter at £4,995.00 + VAT, Seconded by Coun.Rattlidge. (All unanimous)

To note the date of the next PC meeting: **Tuesday 3<sup>rd</sup> March 2026 at 7.15pm**

***The Parish Clerk***

### 3 Feb 26 District Councillor Report

#### **Potholes**

Please report potholes on the official Devon County Council page where you can report potholes and other road defects to their Highways team:

Devon County Council – Report a pothole or road defect  
<https://www.devon.gov.uk/roads-and-transport/report-a-problem/report-a-pothole/>

You can also start a more general roads-and-transport report here (covering potholes, signage, drains, etc.):  
<https://www.devon.gov.uk/roads-and-transport/report-a-problem/>

If the pothole presents an immediate danger, you may wish to contact Devon County Council Highways directly at 0345 155 1004.

#### **Progress continues at Newton Abbot's Market Hall**

Good progress continues on the refurbishment of Newton Abbot Market Hall, with work inside and outside the building moving ahead well and the project on course to open later this spring.

People visiting the town centre will already have noticed the changes in the Market Square and along Market Walk. Around 70% of the new paving has now been completed, helping to create a brighter, cleaner and more welcoming space. As the work progresses, the improved layout will also make the square more suitable for events and activities.

Inside the Market Hall, important structural works have been completed to prepare the building for its future use. New market floors are now in place, along with improved stall areas that will support a range of traders as well as community and event use.

One particularly noticeable addition is the new staircase, which has become a strong feature within the building and improves access between floors. Overall, the works are modernising the hall while still respecting its historic character.

The project remains on track for a late spring opening, and further updates will be shared as plans for opening and future use are confirmed.

#### **Budget Report - Revenue Budget.**

Due to business rates reset and cuts to our revenue grants Teignbridge District Council (TDC) sees an 11.69% cut to our existing revenue budget. Further to this will result in a 5% cut to core funding over the next 3 years before even allowing for inflation which will see this value rise further. We will also see complications with increases in and expansion of Business rates as any increases either by increase the rates tax base or increases in the rates themselves will not see a benefit to the districts funding.

We have a settlement from government, but what is offered leaves us as one of the worst effected councils by the reset. The settlement of £3.6million as well as having TDC strategic reserves set aside for the rates reset will help to breach the gap in this budget.

2.99% increase in council tax.

Fees and charges will generally see inflationary aligned increases, but there will be changes to Sunday parking fees, £1.50 for 2hours, £2 for 4 hours and £3 for all day parking. This means that parking all day on a Sunday does see an increase whilst parking for 2 hours or less is lowered to more closely align with standard charges for 2-hour periods.

100% council tax reduction scheme is retained to help support our most vulnerable residents.

4% increase in grant funding for voluntary groups within Teignbridge.

Councillors' community fund is retained in full.

### **Capital Budget.**

£53.8m capital budget spread over 3 years being one of the most ambitious works programs Teignbridge has sort to deliver. This will be in line with our new One Teignbridge strategy and focus on delivering investment in our communities across Teignbridge including.

New mobile and covert fly tipping cameras in hot spots to tackling the growing issue.

Homes for Teignbridge will continue with delivering 52 social housing units within the district.

£1.4m for disabled adaptations and facilities in homes seeing us continue the work of previous years that see us ranked in the top 10% of councils.

£0.6m for the completion of custom build housing.

£7.2m to deliver 23 social rent flats in Teignbridge at the Sherborne house site which will be some of the highest quality social housing built in the country. These social homes will be not just to rent at social rates but will also look to help lower the running and living cost of the residents in them to bring even more support to those who most need help.

£1m for A382 improvements further £3.2m for highway improvements across Teignbridge.

£0.6m for the Dawlish link road.

£15.7m fund for Education facilities in Teignbridge.

£1.4m for Ridgetop countryside park with the provision of £1.55m for new Countryside Park projects

£1.3m for Dawlish leisure centre improvements.

£1m fund for play park improvements.

£0.65 for Teignbridge estuary and £0.1m for ogwell cycle trails with £1m of funding for additional trails

£0.8m for town and parish improvement match funding.

£5m for the redevelopment and expansion of the waste transfer station and bulking areas.

£3m for employment sites across Teignbridge.

**Please stay away from coastal areas especially around the high tides.** The seafront and coastal areas are continuing to be assessed and repairs carried out following the damage caused by storms.

Some of our waste and recycling rounds have been affected by the flooding and the access to a waste transfer station being blocked. We are currently diverting to a different waste transfer site but this is having a knock-on effect on some of our collections. We apologise to anyone who is being affected by this delay due to the weather conditions.

We are working closely with partner agencies to assess community risks and coordinate support in Teignbridge.

Councillor David Palethorpe

Teignbridge District Councillor – Ipplepen Ward

## **County Report**

My report today is predominantly about highways. These points come from an online Highways department session held on 21<sup>st</sup> January 2026.

Highways are the single largest issue for me as a County Councillor. Below is a list of points which may help residents understand more about this critically important service from Devon County Council.

### Special Report on Highways – Key Points

#### 1. Severe Winter Damage

- Repeated freezes since November have rapidly worsened road conditions.
- Potholes have risen from 650 to around 2,000 awaiting repair.
- Public reports peaked at 500+ per day.
- 42 repair gangs now deployed mainly on safety-critical defects.

#### 2. Funding & National Ratings

- Devon rated amber for maintenance and red for spending.
- Achieving “green” would require £25m extra per year.
- Current funding (£83m + £22.5m) still far below the £101m/year needed just to hold steady.

#### 3. Drainage & Parish Role

- Drainage failures are a major cause of potholes.
- Parishes encouraged to support lengthsman and raise precepts if needed.
- Backlog of 9,000+ drainage issues.
- A new Highways Guide for Parish Councillors is being developed.

#### 4. North–South Divide Myth

- Repairs are allocated by need, not geography.
- Current data shows South Devon has worse conditions and more potholes.

#### 5. Quality of Repairs

- Winter repairs are less durable; rural roads often have shallow construction.
- All repairs are audited; materials are tested and not “cheap”.

#### 6. Prioritisation & Expectations

- Many potholes don’t meet safety criteria, leading to frustration.
- “Serviceability” (non-urgent) repairs will resume in spring.

#### 7. Road Wardens & Training

- Some parishes achieve good results doing small repairs themselves with volunteers trained as Road Wardens.
- Highways are reviewing training needs and technical content.

#### 8. Utility Works & Local Monitoring

- Parishes asked to help spot issues, as enforcement officers have limited capacity.

To be the eyes and ears of the Highways team.

#### 9. Cycle Route Funding Clarified

- New trails are funded from separate capital grants, not road maintenance budgets.

## **Relocation of Coop Store at Ipplepen**

Many of you will know that there are plans to relocate the Coop Store at Ipplepen. As always, planning aspects are rarely straightforward, and we now find that the future of having a Coop Store at Ipplepen to be at risk.

I am now engaging with the parties concerned to try to safeguard this important amenity.

CIlr Heather Horner

Ipplepen & The Kerswells



# MANOR

Self Storage | Business Park

Storage For Everyone

**Manor Business Park**

Drive up storage

Warehousing

Workshops

Office rentals

*Home to over 20 local businesses*



[www.manorselfstorage.co.uk](http://www.manorselfstorage.co.uk) | Tele: 01803 812570

Dainton Manor Business Park, Dainton, TQ12 5TZ

- Overgrown Garden Clearance
- Hedge Cutting



- General Garden Maintenance
- Fencing

## **SUPER**SCAPES

***Garden Maintenance and Fencing***

*Friendly & Reliable, Based in Ogwell.*

Tom Wotton 07969 757 727 [info@superscapes.co.uk](mailto:info@superscapes.co.uk)



## OUR MONTHLY WEATHER

### JANUARY

<b>Year</b>	<b>2026</b>	2025	2024	2023	2022	2021
Highest temp. (°C)	<b>12.2</b>	13.1	12.9	12.9	14.6	12.9
Lowest temp. (°C)	<b>-4.4</b>	-5.0	-7.0	-4.9	-4.6	-4.7
Average max. temp. (°C)	<b>8.8</b>	8.5	8.4	9.0	9.6	7.8
Average min. temp. (°C)	<b>2.1</b>	1.4	1.9	1.8	2.3	1.7
Total rainfall (mm)	<b>262.2</b>	220.2	129.4	188.0	64.9	135.2
Number of dry days	<b>5</b>	12	19	14	17	14

**General Comments:** Perhaps we should rename this month 'Stormuary'! There were three named storms – Goretta, Ingrid and Chandra – hitting us in quick succession. We did not feel the full brunt of Goretta but it did bring some heavy rain and strong winds. Ingrid and Chandra had more impact bringing localised flooding and some downed trees. However, our coastal regions suffered more with Ingrid bringing about the loss of substantial parts of iconic Teignmouth Pier.

Statistically, despite this month's rainfall, January remains our second wettest month of the year with an average of 135.4 mm of rain. Our rainfall this January, though, was sufficient to mount a challenge for first place but, at 135.8 mm, October still just remains the wettest month of the year on average. This is the wettest January in our record and the second wettest month since before 1987 – December, 2000 recorded 296 mm. Thus, our total rainfall this month is about 98% above the long term mean.

Surprisingly, the first week of the month was quite dry but thereafter it was persistently wet! Ten days received rainfall of 10 mm or more including four of 20 mm or more but the wettest day produced 35.6 mm of rain. We saw a light fall of hail on the 16<sup>th</sup> and some misty mornings that of the 19<sup>th</sup> being especially dense and persistent. Not unexpectedly, the net result of all of this was a very low number of dry days – only two Januarys in the past forty years have had fewer. We would have expected 12 or 13.

The maximum temperature was well into the lower half of our data whilst the minimum temperature was in the lower third. However, several of those maxima were in double figures (8) and we managed to record an average maximum temperature just into the warmer half of our record. Never the less, with only 5 minimum temperatures above 5°C, the average minimum temperature was fully 1.1°C below the mean placing it firmly in the coldest third of our data. Together, these combined to produce an average temperature for the month of 5.45°C, about 0.45°C below the long term average and again in the coldest third of our record.

We had eight days with temperatures at or below zero which is less than we might have expected – the average is about thirteen.

The wind direction was westerly to south-westerly for the first half of the month before backing towards easterly to south-easterly for the second half. The strongest gusts came from the east-south-east early in the month and from the south-east towards the end. These peaked at just under 35 mph (Near Gale, Force 7). The wind run was 1750 miles, well below average but not a record.

The barometer touched a high of 1032 mb and reached a deep low of 968 mb.

Essentially, very wet, quite windy and moderately cold with limited opportunities to get out and about comfortably with most forays falling into the 'necessary' category.

**Martin Stentiford**



**MARCH  
IN MARCH**

**I'M GOING THE DISTANCE FOR  
VETERANS' MENTAL HEALTH**

**SUPPORT ME**

**COMBATSTRESS**

Hello

Robin and Pam Thomas are going to walk 10 miles between our 5 churches on 14<sup>th</sup> March 2026. We would love to have as many sponsor us as we can.

If you feel that you could sponsor us then please go to the link below:

<https://events.combatstress.org.uk/fundraisers/pamthomas/marchinmarch> for Pam

<https://events.combatstress.org.uk/fundraisers/robinthomas> for Robin

Of course we would love you to join us for the walk and get your own sponsorships. If this is something you would like to do, then do contact either Pam or Robin asap on

[rthomas102030@btinternet.com](mailto:rthomas102030@btinternet.com) or [mynwypam@gmail.com](mailto:mynwypam@gmail.com)

PACK IT, BOX IT AND WE WILL STORE IT

CLEAN • SAFE • SECURE



Secure Container Storage • Internal Storage Units • Long & Short Term Storage • Unlimited Daytime Access  
CCTV • Packing Materials & Boxes • Archive Storage

## Westcountry Self Storage

01803 813943  
07850 317304

On the Main Road A381  
Newton Abbot to Totnes Road  
Totnes Road, Ipplepen, Newton Abbot  
Devon TQ12 5TN

[www.westcountryselfstorage.co.uk](http://www.westcountryselfstorage.co.uk)

\* All prices subject to VAT



# QUAY

## S C A F F O L D I N G

For all your scaffolding requirements  
from complete design scaffolds  
to basic access scaffolding.

**For a free quotation and friendly advice, please call**



**TOM ALLEN**  
**07980 632604**



Ipplepen based

# JB's Quiz

- 1) In which film do we come across a cat called Figaro and a goldfish called Chloe?
- 2) Which top worldly man wrote his book called 'The Art of Happiness'?
- 3) A leap of leopards, A pride of lions, A coalition of what?
- 4) On US tv the College Bowl competition is the equivalent of which UK tv show?
- 5) The Zugspitze is the highest mountain in which European country?
- 6) In London, what is affectionately known as the N.P.G.?
- 7) What type of creature is the mascot of the US Baseball team The Pittsburgh Pirates?
- 8) Which is the world's most cosmopolitan River in that it runs through 10 countries?
- 9) James, George, Charles, Henry and Hetty in Pink can all be what?
- 10) In a certain 80's film, what car was powered by Plutonium?
- 11) Which small traditional French sponge cake is baked into a shell shape and is also a female name?
- 12) If you are called Jurgen in Germany what is the English equivalent?
- 13) On a placemat in a Spanish restaurant it says 'Buen Provecho'. What is the French equivalent?
- 14) Who wrote the words in 1788 to Auld Lang Syne?
- 15) In the book of Genesis in the Holy Bible, how many pairs of animals did Moses take into the Ark?

Thanks to John Broadbent for his quiz

Answers on page 45



Local Honey,  
Beeswax candles and  
Beeswax hand lotion.

Call Kathy 07925 115709

## BIRBECK LANDSCAPES

Jaynes Free Range eggs

Free quotes-Hedge cutting.

Locally Farmed

Lawns cut. Fencing. Turfing

Free Delivery Ipplepen Mag area

Rubbish can be removed

**Contact Simon or Jayne 07855 435237**



## Knowle Tree Services

Your Local Tree Specialist

ALL aspects of tree care since 2006

Domestic and Commercial Tree Work  
Hedge Cutting and Removal  
Qualified and Highly Skilled Team  
Planning Applications  
Help with TPO's  
£5m public liability insurance  
FREE consultation and NO obligation  
quotations

### LOGS

Dried Logs always available for delivery

Tel. 07803 441759

Tel. 07711 828184

[enquiries@knowletreeservices.co.uk](mailto:enquiries@knowletreeservices.co.uk)

[www.knowletreeservices.co.uk](http://www.knowletreeservices.co.uk)



## Handy Bob



Any odd job that needs doing,

Lawns, Small hedges, Borders, Painting etc.

Just phone to find out more on: **01803 812723**

# JB's Quiz

- 1) In which film do we come across a cat called Figaro and a goldfish called Chloe? **Pinnocchio**
- 2) Which top worldly man wrote his book called 'The Art of Happiness'?  
**The Dalai Lama**
- 3) A leap of leopards, A pride of lions, A coalition of what? **Cheetahs**
- 4) On US tv the College Bowl competition is the equivalent of which UK tv show? **University Challenge**
- 5) The Zugspitze is the highest mountain in which European country?  
**Germany**
- 6) In London, what is affectionately known as the N.P.G.? **National Portrait Gallery**
- 7) What type of creature is the mascot of the US Baseball team The Pittsburgh Pirates? **A Parrot**
- 8) Which is the world's most cosmopolitan River in that it runs through 10 countries? **The Danube**
- 9) James, George, Charles, Henry and Hetty in Pink can all be what?  
**Vacuum cleaners**
- 10) In a certain 80's film, what car was powered by Plutonium? **DeLorean**
- 11) Which small traditional French sponge cake is baked into a shell shape and is also a female name? **Madeleine**
- 12) If you are called Jurgen in Germany what is the English equivalent?  
**George**
- 13) On a placemat in a Spanish restaurant it says 'Buen Provecho'. What is the French equivalent? **Bon Appetite**
- 14) Who wrote the words in 1788 to Auld Lang Syne? **Robert Burns**
- 15) In the book of Genesis in the Holy Bible, how many pairs of animals did Moses take into the Ark? **NONE it was Noah**



# A.J. GIBBONS FUEL MERCHANT

– 01626 834449 –

SOLID SMOKELESS FUELS

BOTTLED GAS

KINDLING - KILNED DRY LOGS

CHIMNEY SWEEPING

*Our kiln dried logs are locally sourced and  
kilned in-house, providing a cleaner and*

*more efficient burn*

**Prompt delivery on all fuels**



Unit 2, Blue Waters Ind Est., Pottery Road,  
Bovey Tracey. TQ13 9YF

# A.S. MOTORS

(DEVON) LTD



- MOTs
- SERVICING
- WELDING
- BREAKDOWN & RECOVERY
- CARS AND COMMERCIAL
- ALL MAKES OF VEHICLES

Unit 8, Ruby Farm,  
Abbotskerswell, Newton Abbot  
TQ12 5NQ

07525 394937

We run a pickup and collection service

# ABBOTSKERSWELL REPAIR WORKSHOP

## About us

From Vernon – the Chair

I, like the great majority of the viewing public, have been enthralled and fascinated by the BBC production, 'The Repair Shop'. This very successful series has been the motivating force behind starting up many local repair shop groups. We are one of those groups! Abbotskerswell Repair Workshop had our 'inaugural' meeting in the Parish rooms, 23rd. January 2020. Our members not only consist of 'hands on' repairers taking on tasks like dealing with small electrical items, upholstery, cane work, garden machinery, musical instruments, bicycles, welding/metalwork, carpentry and more, but also other very important attributes, like organizing, recording, finance, collecting etc.

The one thing that we all have is community spirit, which as every local person will be aware of, is in abundance in our village, especially in the very trying and distressing times of lockdown, Our aim, from the outset, has been to set up a local facility that will be available for not only repairing and recycling, but to build a community 'tool' library, assist other local groups etc. We are not working for profit, nor taking away work from local tradesmen but working for donations, so that we can build an ongoing asset for all.

Throughout lockdown we have safely managed to help with a few repairs and recycling issues even without a building. Right from the formation of our group we were aware of the unused building in Vicarage Road, The old Chapel. To have the use of a property of that size, and in that locality, would be the ideal dream!

Well, unbelievably, we, along with the Parish Council, found ourselves in a position of being able to make this dream a reality. The previous owner of the building wanted to sell, and his preferred option is to see the property become a village/community asset. The Parish council agreed to take on ownership and we as a village group were willing to take on the great task of raising the funds to refurbish, maintain and be financially responsible for this characterful but neglected building

. Then on 25th January 2021 during the Parish Council meeting, it was resolved to seek the approval of the Secretary of State for housing, Communities and Local Government to apply for a PWLB Loan to purchase the building on behalf of Abbotskerswell Repair Workshop. Now all we had to do was to roll up our sleeves and get to work!

Vernon

Abbotskerswell Repair Workshop

Vicarage Rd, Abbotskerswell, Newton Abbot TQ12 5PN



**Our friendly community shop  
has been run by volunteers for 16 years!**

**Everyday items**

**Gifts and cards**

**Coffee shop with homemade cakes**

**Hot and cold savoury snacks**

**Post Office services**

**We are open:**

**Shop: Mon - Fri 8.30am to 6pm. Sat 9am to 1pm. 01803 813347**

**Post Office: Mon - Fri 9am to 1pm Sat 9am to 12pm 01803 814335**

**[www.broadhempstonshop.co.uk](http://www.broadhempstonshop.co.uk)**

**[broadcomshop@gmail.com](mailto:broadcomshop@gmail.com)**