

**The** April 2026  
**Ipplepen**  
**Magazine**



**News and events around the Parish**

**Peter Tomkinson**  
***Electrical Contractor***

**EV charging points - Inspection and testing - PAT**  
**From an additional socket to a rewire**



**01803 812444 or 07779 249486**

**mail@petertomkinson.co.uk**



**CONSERVATORIES    KITCHENS**  
**WINDOWS            BATHROOMS**  
**DOORS                GARAGE DOORS**  
**PORCHES             HOME IMPROVEMENTS**

**over 25 years experience installing... PVC-U ALUMINIUM HARDWOOD**

**Please call for a FREE no obligation quotation...**

**M: 07855 355853    T: 01626 201911**

**Moor to Shore Dog Walking Services**

**Ipplepen based dog walker, also covering Abbotskerswell, Ogwell and Denbury, for group walks.**

**Contact Kim on 07762 912 772**



**R C N**  
**T R E E W O R K S**



**T R E E   S U R G E R Y**

**FOR ALL YOUR TREE SURGERY NEEDS**

**TEL: 07496690271**

**EMAIL: RCNTREEWORKS@GMAIL.COM**

# The Ipplepen Magazine

## Editor:

Trevor Ashford  
6 Caunters Close, Ipplepen  
[trevorashford321@gmail.com](mailto:trevorashford321@gmail.com)

## Adverts/Treasurer:

Kathy Langabeer  
[kathylangabeer@gmail.com](mailto:kathylangabeer@gmail.com)  
To advertise in *The Ipplepen Magazine* please call 07925 115709

## Distribution:

Barbara Hawksby-Calland  
[b.ipplepen@btinternet.com](mailto:b.ipplepen@btinternet.com)

The magazine is also  
available online.

[www.ipplepenmagazine.com](http://www.ipplepenmagazine.com)

**Copy deadline for  
next month's issue**

**15<sup>th</sup> April, 2026**

*The Ipplepen Magazine* is produced each month and 1,350 copies are distributed free of charge to every household and business in the Parish.

Clerk to Ipplepen Parish Council	813250
Ipp Church Hall	<a href="mailto:p.emmerson@live.co.uk">p.emmerson@live.co.uk</a>
Ipplepen Village Hall (booking)	813906
Teignbridge District Council	01626 361101
Devon County Council	0845 155 1015
Devon County Council (Roads and Transport)	0845 155 1004
Ipplepen Health Centre	874450
Ipplepen Primary School	812226
Saplings (Pre-school and before/after school clubs)	812466
Newton Abbot Hospital	01626 324500
Torbay Hospital (Switchboard/ general enquiries)	614567
NHS Direct (24 hours)	111
Police – non-urgent calls (24 hrs)	101
Electricity (24 hour emergency service)	0800 365 900
Gas (24 hour emergency service)	0800 111 999
Water (24 hour service)	0800 230 0561
<a href="mailto:Martin.Wrigley.MP@Parliament.uk">Martin.Wrigley.MP@Parliament.uk</a>	
Ipplepen Hub	01803 814100

## IPPLEPEN MEMORY CAFE

21st April 2026 2.00pm -3.30pm



St Andrews Church Hall

Theme Spring is here!

Coordinator David Garland 07342884432

Secretary Rose Debenham 01803 813458 Or 07549827620

If you wish to attend please contact the above persons.

Date of next meeting 19th May

## WALT GOODING



Rose and her family would like to thank everyone for their kind wishes and condolences on Walt's passing.

We did not fully realise how well thought of he was within the village.

To date we have received £900 in donations, this is to be split between Dementia UK & The Ipplepen Village Hub.

We would like to thank The Reverend Andrew Down & Miss Sara Crouch for the lovely service at St Andrews Church.

A big 'Thank You' also to Nick and his crew at Parkers Funeral Directors for their kindness and professionalism.

Finally a big shout out to all who helped the day run smoothly.

**Yet again Ipplepen "YOU DID HIM PROUD"**

Thank you all.  
From Rose and Family.



# BRIAN ELWILL

Ann Elwell would like to thank everyone who attended Brian's funeral on Friday 20th February at the Methodist church. It was wonderful to see the church full and over £1000 was raised in Brian's memory and donated to Rowcroft.


Special thanks to Kevin, Maria and David at the Methodist, at The Wellington and Ipplepetals who all ensured Brian got the send off he deserved. Forever thankful for this village. Ann, Stephen and Katie.

---

## Need Help Getting to a Medical Appointment?

Kerswella's volunteer drivers are here to help you get to **hospital and surgery appointments** when you have no other way of travelling.

Our friendly, community-spirited team can get you there safely for a modest donation which covers volunteers' costs.

 **Call Richard at Kerswella on 07587 973977 - give him your appointment details and he'll do his best to arrange a driver for you**

## Trailblazers Afternoon Group


Looking for good company, laughter, and something different each month? Join the **Trailblazer Seniors** on the **SECOND Wednesday** of every month at **1.30pm** in the Village Hall.

Enjoy a friendly mix of **chat, games, quizzes, bingo, guest speakers**, and the occasional lunch outing. Hot drinks and cake of course ! Recent highlights include a Rat Pack serenade from **Phil Jeffreys** and a visit from **The Bird of Prey Centre** with a lovely little kestrel.

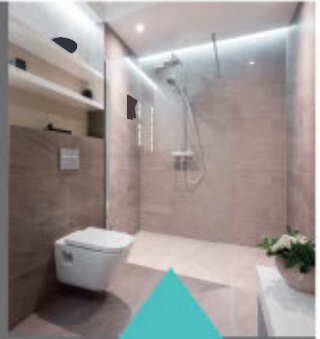
**Upcoming "Trailblazing" afternoon dates 2024:**

**13 May • 10 June • 8 July • 12 August  
9 September • 14 October • 11 November • 9 December**

**£3.00pp includes raffle ticket**

 **For more information, contact Gill at Kerswella on 07554 667037 for more info and to check what's on each month**

# SHOWER IN LUXURY, COMFORT AND EASE



Are you struggling to bathe or get out of the bath?

Why not step into a brand new walk-in shower with ease.

Our expert installers will convert your bathroom into a modern, luxury bathroom. Built to suit your needs, once again making bathing safe and pleasurable. With over 25 years of specialist experience, we will personally oversee every aspect, from design to installation.

A BATH  
TO SHOWER  
IN 48HRS

 **ABILITY BATHE**  
Specialists in Bathrooms

Request your free quotation today!

Visit [www.abilitybathe.co.uk](http://www.abilitybathe.co.uk)

or call 01803 814309

Est

**RENDELLS**

1816

[www.rendells.co.uk](http://www.rendells.co.uk)

Chartered Surveyors - Estate Agents - Letting Agents - Land Agents - Commercial Agents -  
Livestock Specialists - Fine Art - Smallholders Markets - Farm & Machinery Sales -  
Valuers - Auctioneers



**Newton Abbot Office**

13 Market Street, Newton Abbot, Devon, TQ12 2RL

Tel: 01626 353881

Email: [newtonabbot@rendells.co.uk](mailto:newtonabbot@rendells.co.uk)

Ipplepen

# VILLAGE CINEMA

Ipplepen Village Cinema *Presents*



## WICKED: FOR GOOD

2025 | Cert PG | 2h 17m

Director: Jon M Chu

7.30pm, Wednesday, 8th April

The second of a two-part feature film adaptation of the Broadway musical, starring Cynthia Erivo, Ariana Grande and Jeff Goldblum.



### IPPLEPEN VILLAGE HALL

Doors open at 6.45pm

Tickets on the door: Adult £4.00 (members £3.00), Child (under 15): £2.00

Raffle, Refreshments | Soft Drinks, Wine, Beer, Tea/Coffee, Ice Cream, Snacks



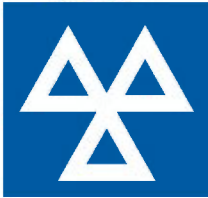
NATIONAL LOTTERY FUNDED



# RED POST GARAGE

Est: 1896

CLASS 4



-  Local, friendly family run business
-  Fully trained technicians
-  Diagnostics
-  All types of vehicle repair work undertaken
-  MOTs on cars, vans, 4x4s and campers up to 5000kg
-  12 month warranty on all parts and labour
-  Digital Service History upload available on many makes
-  Courtesy cars available on request



Tel 01803 812389

Email [mail@redpostgarage.co.uk](mailto:mail@redpostgarage.co.uk)

Web [www.redpostgarage.co.uk](http://www.redpostgarage.co.uk)

Open Mon–Fri 8am–5.30pm Closed Sat/Sun

# Ipplepen Amateur Dramatic Society



Springtime in Ipplepen - are you feeling excited at the prospect of sunshine, garden colour, blossoms and lush greenery, the scents and sounds of the countryside, when you are out having a brisk or leisurely walk?

Quite the contrast to the awfy dreich start we had to the year.

Yes, it was just like living in a fairy tale - *Grimm!*

But, we are not going to dwell on that. Let me tell you something much more positive.

We at **IADS** have been puzzling away, putting our heads together with the premise to devise bright and novel ideas to help entertain you in the coming months.

We are quite a creative bunch, so look out for what we come up with. We'll let you know in this magazine and of course our Facebook page.

Our popular "Two's Company" plays are a definite possibility, as are some "Readings and Recordings", a Murder Mystery and an Escape Room idea have also been discussed.

But, all of our new ideas will be much more fun with more players.

So, please do get in touch if you'd like to get involved, start a new hobby, re-kindle a love of performing - it`s never too late and you know we'd love to welcome you to our group. You might have some great ideas to share with us too.

If you are interested in joining in with one of Ipplepen's oldest and most fun societies you can call me on 01803 813774. I'm looking forward to hearing from you!



**CAFE - LIBRARY - EVENT HIRE - TODDLER TIME - GRIEF CAFE - CRAFT GROUPS**



**The Hub is open Tuesdays, Wednesdays and Thursdays 10am – 4pm.**

We offer hot home-cooked lunches every Tuesday and Thursday, with bacon rolls on Wednesdays, and jacket potatoes and toasties at all times. The lunch menu is posted on Spotted Ipplepen on Facebook each week.

Our well-stocked library has just received 20 new books, 25 new DVDs, and 8 new jigsaws. Wi-fi is free, the computer has a guest logon, and you can use our printer and colour photocopier for a minimal charge.

Our Toddler group is now in the huge back room from 9am on Thursdays, so our other customers have more room and a bit more quiet, in the main hall. We have a ramp for buggies, and baby-changing facilities.

Upcoming free events, open to everyone, with no booking required:

- Wed. 8<sup>th</sup> April from 10.30am – Digital Drop-in – hosted by Mark.
- Wed. 8<sup>th</sup> April from 2pm – The Grief Café – hosted by Cathy.

**If you'd like to volunteer with us, we need people in both our café and library. We work in shifts, so typically you'd do either 10am-1pm or 1-4pm.**

We now have 3 rooms to hire outside normal opening hours for activities and clubs. Please contact Steve Major on 07784 719514 for pricing and availability.



Scan for news & events.

*We Are Always Looking for*  
**VOLUNTEERS** 

**01803 814100**

**ich.org.uk**

# *Ipplepen Village Garden Show*

## *18th July 2026*



Preparations are well underway for the Show, so here are a few teasers of the categories for the Floral Art and Handicraft sections.

### **Floral Art Section A**

A hand tied arrangement.      A wreath for the door.

An arrangement suitable for a church window.

A display depicting the Garden Show.

### **Floral Art Section B**

An arrangement to mark the 100th anniversary of Winnie the Pooh.

A Miniature Garden on a dinner plate

### **Handicraft**

Sew an item of clothing.

A Landscape of any medium, hand stitched.

More details to follow in May.

We will be running the Grand Draw again, with the fantastic top prize of £100.00. I am always looking for more prizes and am always very grateful for donations. Please get in touch if you can help.

If you are part of a Village Group, now is a good time to start planning what you are going to do. The time is rushing by at an incredible rate. We have a great team of volunteers and are always looking for more. I know you all have busy lives but it is just Show day and Sunday Morning where help is needed. Please get in contact, details below.

Put the date in your calendars now. 18th July 2026.

Karen Careswell Show Chairman 01803 813566

[Chairman@ipplepenvillageshow.co.uk](mailto:Chairman@ipplepenvillageshow.co.uk)





Friendly and reliable garden and property maintenance services in Ipplepen and the surrounding area



Gardens & Outdoor Spaces



Interior & Exterior Painting



General Maintenance

07730 047190

info@elmsideservices.co.uk

www.elmsideservices.co.uk



EST. 1992  
**REDPOST**  
≡ EQUESTRIAN, PET & COUNTRY LIVING ≡

**VISIT THE STABLE CAFÉ**  
BREAKFASTS, LUNCHES, LITE BITES,  
DELICIOUS BAKES & TASTY TREATS  
ALL FRESHLY PREPARED



FEED & BEDDING | TACK | FOOTWEAR | COUNTRY & EQUESTRIAN WEAR

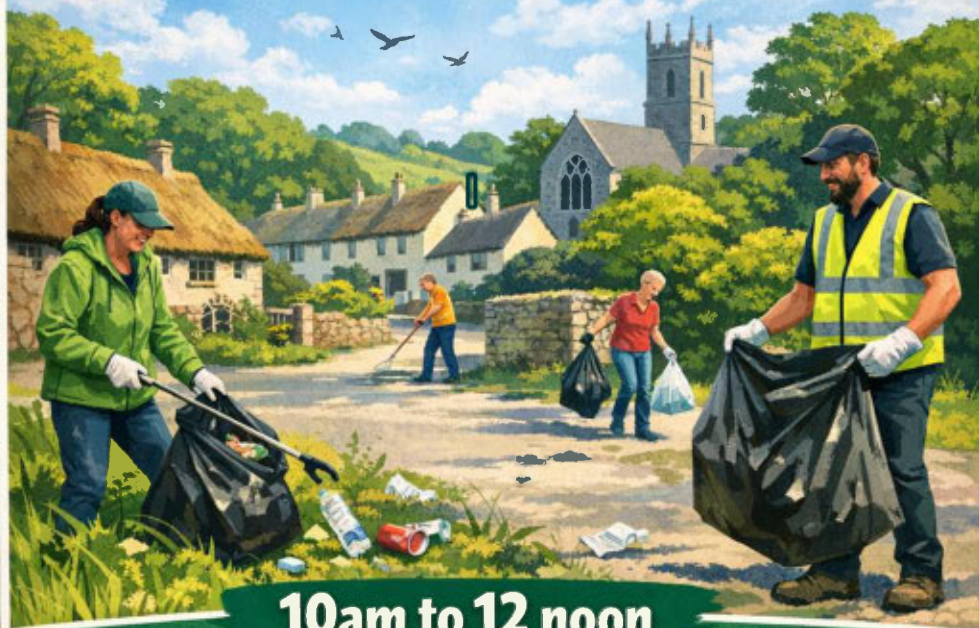
**STORE & CAFÉ OPEN 7 DAYS A WEEK**

LILLISFORD STUD, LITTLEHEMPSTON, TOTNES, DEVON, TQ9 6NG

**WWW.REDPOSTEQUESTRIAN.CO.UK**

# IPPLEPEN SPRING LITTER PICK

*Looking After the Village*



10am to 12 noon

**SATURDAY 25<sup>TH</sup> APRIL**

*Meet at the Millennium Centre (Saplings)*

*All welcome!*

Contact: David Palethorpe

**07506 422686**

[david.palethorpe@teignbridge.gov.uk](mailto:david.palethorpe@teignbridge.gov.uk)



# G-Elec

Domestic & Commercial

The reliable family business, an Electrician you can trust

All Electrical work undertaken, large or small

- Testing & Certification
- Inspection & Fault Finding
- Complete / Partial Rewire
- New Fuse Board Installation
- Additional Sockets
- Internal / External Lighting
- Replacement Sockets / Switches
- External Power

**07561 437461**

**info@g-elec.co.uk**



## Foot Health Care Professional



Nicky Quant MCFHP MAFHP

*Foot health care in the comfort of your own home*



- Toe Nail Cutting
- Callous/Hard Skin Removal
- Problem Corns

For a friendly, professional service call to make an appointment

**Mobile: 07787 573397**



Stonelands Bed & Breakfast,  
Causeway Cross, Ipplepen, TQ12 5TB  
01803 812217 / 07795281123  
[sue.slade1963@gmail.com](mailto:sue.slade1963@gmail.com)  
[www.stonelandsbedandbreakfast.co.uk](http://www.stonelandsbedandbreakfast.co.uk)



Located on the edge of Ipplepen village, Stonelands B&B is the perfect base to explore all that South Devon has to offer. The property has recently been extended and modernised throughout, including three guest bedrooms, each with an en-suite and plenty of natural daylight.

Our special Stonelands breakfasts are freshly prepared, consisting of tasty local produce which will set you up for a day of exploring. We have ample free parking available directly outside the house. We look forward to welcoming you in the near future!

Peter & Sue Slade



## Talk

Our annual early spring double of talk and coffee morning kicked off at the end of February with a visit from Tracey Norman. Tracey is a local historian, author, and playwright. The focus for her talk was 'Plants, Poulitices and Persecution.' So it was that a good group of us found ourselves on one of those wet evenings in February talking about cures for all sorts of ailments such as warts, headaches and chilblains which had been passed down through our families. From her own research into the papers of Lady Fortescue of Castle Hill in North Devon Tracey's main point was that the remedies offered by rich and influential families like the Fortescues, differed little from those practised by ordinary folk. She was delving into the beliefs of people in a pre-scientific age and whilst we may cast doubts regarding the efficacy of frogs and snails when searching for cures, we can all accept that much of our own approach to medicine owes a lot to plant-based remedies which have been proven to be more than just folklore.



## Coffee Morning

For our coffee morning we enjoyed sifting through our collection of Ipplepen's sports teams over the last century or more. Ingrid put together a presentation embracing football, cricket, bowls, snooker, tennis, and tug-of-war. More recent arrivals to the village may not be aware that both the football and cricket teams played up at the recreation ground or 'the park.' The changing facilities at the Village Hall were pretty basic and it was not unheard of for certain village characters to walk across the pitch during cricket matches. They will not be aware that the facilities on Moor Road for football and cricket required a monumental effort to create the facilities that we see today.

## Help Me Represent Great Britain –

### GB U20 Girls Water Polo Team Fundraiser GB

Hi everyone,

My name is Jo Tuckett. I grew up here in the village, went to Ipplepen Primary School, and been part of the local scout group. Growing up in such a supportive community helped shape who I am today and gave me the confidence to pursue my passion for sport.

For the past several years, water polo has become a huge part of my life. I train hard throughout the year and last summer I had the incredible opportunity to represent Great Britain with the Women's U18 Water Polo Team at the European Junior Championships in Malta. Competing against some of the best young players in Europe and wearing the GB cap was an unforgettable experience.

This year I'm incredibly proud to have been selected again, this time for the Great Britain Women's U20 Water Polo Team, who will compete in the European Junior Water Polo Championships in Portugal this August. Representing my country at this level is something I've worked towards for many years, and it means so much to me. However, many people don't realise that junior international water polo in Great Britain is largely self-funded. The whole team has to raise £30,000 to cover training camps, travel, accommodation, and the cost of competing in the tournament.

Every member of the team is working really hard to fundraise, but it can still be a big challenge. After months of training and preparing together, it would mean the world for the whole squad to be able to travel and compete. That's why there is Great Britain U20 Water Polo Squad GoFundMe page to help raise the funds needed. Any donation — big or small — would make a huge difference and help me and the girls take this amazing opportunity to represent Great Britain at the European Championships.

If you're able to help, even a small contribution would mean so much. And if you can't donate please can you share this with others would be hugely appreciated as well.

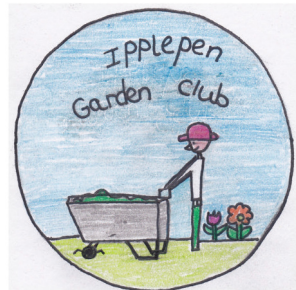
Every bit of support makes a difference 

Thank you!

Jo

22<sup>nd</sup> April 2026 at 7.30pm  
in Ipplepen Village Hall

## **Robin Hill 50 years of gardening on Dartmoor**



The garden at Andrews Corner has been open to the public under the National Garden Scheme since 1971 and also for the Childrens Hospice South West. Situated on the northern edge of Dartmoor, the garden derives its unique character from the contrast between the rugged grandeur of the open moor and the verdant serenity of a cultivated garden.

**Raffle and Refreshments**  
**'Grown in your Garden' competition**  
Everyone welcome!

**Members £3 Non members £4**

Heather Aplin had a large audience for her fascinating talk on The Italian Garden at Great Ambrook. The garden was designed for its original owner, Arthur Graham, as a place for entertainment at the beginning of the last century. He was a very wealthy man, who had been influenced by visits to Italy, but after his death the garden fell into disrepair, becoming completely overgrown, until the 1980s when it was rediscovered and some renovation work took place. When it was sold to the present owners, they set about restoring it with the help of the Heritage Lottery Fund and many local volunteers.

Recent work has included the removal of a rampant Virginia Creeper from the summerhouse, the rebuilding of a 33 metre pergola, the removal of 300 self-seeded trees and the clearance of The Dell, a sunken area which was so full of weeds no one knew it was there. There's still plenty more to be done, with future plans for the investigation of the old watering system.

The garden is open to the public and well worth a visit. Have a look on their website at the [italiangarden.org](http://italiangarden.org) for details of opening over the summer.



## Indoor Secure Self Storage Units

OLD CIDER WORKS ABBOTSKERSWELL

- Accessible 24 Hours 7 Days a Week
- Automated Access
- Flexible Contract
- Variety of Sizes to Choose From
- Ground Floor Units Available
- Simple Online Booking System
- Safe and Secure with Individually Alarmed Units
- Deliveries accepted on your behalf (Weekday working hours only)



### SERVICED OFFICES ALSO AVAILABLE

Please contact Louise for further information

[info@storewell.uk](mailto:info@storewell.uk) 07887995458

[www.storewell.uk](http://www.storewell.uk)



### *Chartered Structural Engineer*

Design and detailing for all new build projects, calculations for house extensions, structural surveys and barn conversions.

#### Contact

Nick Kitchen on

07814 794161 or email

[npk@opusengineeringltd.co.uk](mailto:npk@opusengineeringltd.co.uk)

[INFO@SDPAB.CO.UK](mailto:INFO@SDPAB.CO.UK) ● 07966504888 ● [WWW.SDPAB.CO.UK](http://WWW.SDPAB.CO.UK)

# SAM DAVIES

## BUILDING LTD

EXTENSIONS | REFURBISHMENTS

NEW BUILDS | CONVERSIONS

ALTERATIONS | CARPENTRY

PLASTERING | RENDERING

BATHROOMS | KITCHENS | TILING



[SDPAB\\_LTD](https://www.instagram.com/SDPAB_LTD)



[SAMDAVIESBUILDINGLTD](https://www.facebook.com/SAMDAVIESBUILDINGLTD)

Based in Dainton, Ipplepen



**Oil / Gas / Solid Fuel / Biomass /  
Wood Burner / Solar Thermal / Heat Pumps  
Custom / Bespoke Systems using  
Multi Fuels Thermal Stores.**

**Grant G 1 + Oil Boiler installers  
with a 10-year warranty on the boiler.**

**Design | Supply | Installation  
Maintain | Service - Breakdowns**

(Installing Heating & Hot Water Systems/Boilers since 1976)

**Call: 01803 812090 or 07970 047518**

**email: [tony@safeheattorbay.uk](mailto:tony@safeheattorbay.uk)**

**[www.safeheattorbay.uk](http://www.safeheattorbay.uk)**



10985



2474

**City & Guilds**



**WE ARE NOT JUST A TIMBER MERCHANT  
WE ARE MUCH, MUCH MORE!  
NOW STOCKING:**

- **BULK & SMALL BAGS  
OF AGGREGATE**
- **AGRICULTURAL  
FENCING**
- **PORCELAIN SLABS  
SANDSTONE SLABS &  
PATIO PACKS**

**ANY PROJECT BIG  
OR SMALL,  
SOUTHERN TIMBER  
HAS IT ALL!**

**CALL US TODAY ON  
01803 813 803**



- Patios
- Driveways
- Fencing
- Turfing
- Composite/wood decking
- Full garden renovations



**DS LANDSCAPING**  
& driveways

07896154086

dale.dslandscaping@hotmail.com

# LONDON MARATHON

My name is Paul Paskins, resident of Ipplepen, and I shall be running my 20th London Marathon on Sunday 26th April.

The difference of this London Marathon is that I have been invited to run by the organisers 'My Way' which means as long as I run 26.2 miles on 26th April I can choose my own route. It is all official, I receive a medal and finishers T shirt when it has been downloaded onto the London Marathon App and been authenticated on GPS so my route can be checked.

I will set out at 7.30am (ish) from St Andrews Church and finish hopefully at 3.00pm (ish) at Ipplepen Conservative Cub

I will be running in memory of my son, James, who I lost as a result of a RTA in 2020 and all monies raised will be for MS Society as this was a charity close to his heart.

The route I shall be taking is as difficult and challenging as possible setting out from Ipplepen at 7.30am and heading down to Torbryan up towards Denbury. At the junction I will turn left to Ashburton down the steep hill and then run back up twice. I will then proceed back towards Denbury past the Union Pub down to the Dog Kennels and then run up Moor Lane. From there I will head back towards Denbury and at the junction turn right past Channings Wood and onto Ogwell. I turn round back through Denbury to the Kennels and back up Moor Lane, towards Townsend Hill, down to the Care Home up Beech Trees Lane and complete two laps and then proceed back to Torbryan with the final climb back up to Ipplepen.

Only when I have completed 26.2 Miles will I be able to stop

I will finish at the Conservative Club where there will be a reception.

Attached a link should you wish to make a donation and you are most welcome to spur me on should you wish to catch me on the course during the day.

There might be somebody that may wish to run along side me for a short while!!!

<https://2026tcs londonmarathonmyway.enthuse.com/pf/paul-paskins/post/19881181>

## Thank you for your support

Paul

# Your Home from Home in Toplepen

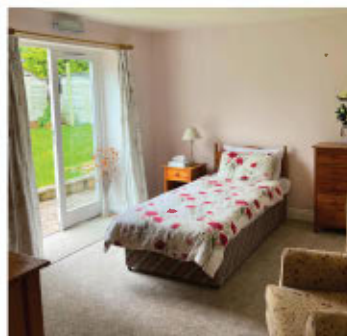
## The Grange Residential Care Home

Nestled in beautiful countryside, our CQC-rated 'Good' home offers more than just stunning surroundings. Here, you'll find a family of residents and carers who'll become your second family. Home-cooked meals, engaging activities and 24-hour care from staff you can trust.



## North Grange Supported Living

For those cherishing independence, our supported living home is your perfect sanctuary. Maintain your lifestyle with the reassurance of 24/7 staff presence. Share home-cooked meals with friends or relax in our cosy communal areas – just like you would at home.



Ready to find your new home?  
Call us on **07704 573281** to arrange a visit!  
[www.southdevoncareservices.com](http://www.southdevoncareservices.com)





# The Church In Ipplepen



## April Abundance: Easter a good time to try church.

April is a wonderful month. It can however be challenging. With incredibly mixed weather it can be hard to acclimatise. In just one week (and even day!) there can be bright sunshine and warmth and the next day a cold snap and the associated frost not to mention the April showers. There is amongst all of this the abundance of life which is truly marvellous. The winter hibernation comes to an end and we see slow worms again in our gardens. The raucous dawn chorus begins the day. The orange tip butterfly emerges from last year's pupa. At dusk bats on the wing can be seen again as they hunt building up their depleted reserves. Then at the end of the month, after their long summer in Africa, the swifts return.

In our churches during April and on into May we will be celebrating the wonderful season of Easter: the central story in our Christian faith. From sundown on Maundy Thursday (2nd April) to sundown on Easter Sunday (5th April) we celebrate the great mystery of God's love in the person of Jesus. These three days are known as the triduum.

1. On Maundy Thursday we celebrate how Jesus loved his disciples to the end, stopping at nothing for love. Jesus gives himself in a meal and in washing his disciples' feet.
2. On Good Friday we celebrate Jesus' faithfulness in the light of human fickleness. A faithfulness that took him to the cross. In the cross Jesus did all to overcome human weakness and reconcile us to God.
3. On Easter Eve we celebrate that God could not wait to share his love and dispel fear. Jesus is risen at night.
4. On Easter Day we begin our celebration of the mystery of Easter a celebration that lasts 50 days. We celebrate that in Jesus' resurrection darkness becomes light, death becomes life, sacrifice becomes love.

God's love is hard to believe, this was true for the first disciples as it is for us, we too must see and then come to believe. Just like the April weather it can be hard to acclimatise to the highs and lows of this story. But just like April there is abundance of life and so during the rest of the month and on into May we celebrate this abundance and what it means in our lives. We acclimatise to the Easter story.

If you haven't tried church for a while (or perhaps ever) this is a perfect time to give it a go: to come out of hibernation, to emerge again and spread your wings or like the swifts to return after a long time away; to bring your voice and join in the raucous Easter chorus.

## St Andrew's Church, Ipplepen

### Contact us

Rector: Reverend Andrew Down 813403  
The Church Office: Mrs. Alice Blanchard 814178  
St Andrew's Church Wardens: Mrs. Sue Hird 813386 Mr. Clive Tompkins 07704 919994  
St Andrew's Church Hall Hire: Pauline Emmerson p.emmerson@live.co.uk

### Sunday 5<sup>th</sup> April – Easter Day

Time	Service	Location
09.00am	Celtic Morning Prayer	Woodland
09.30am	Holy Communion	Broadhempston
10.30am	Holy Communion	Denbury
11.00am	Holy Communion	Ipplepen
5.00pm	Encounters Evening Service	Ipplepen Methodist Church

### Sunday 12<sup>th</sup> April – The Second Sunday of Easter

Time	Service	Location
09.00am	Holy Communion + Children's Craft Table	Broadhempston
11.00am	Holy Communion	Ipplepen
5.00pm	Evening Prayer + Benediction	Denbury

### Sunday 19<sup>th</sup> April - The Third Sunday of Easter

Time	Service	Location
09.00am	Holy Communion + Children's Activities	Denbury
11.00am	Holy Communion + Children's Activities	Ipplepen
5.00pm	Candlelit Celtic Evening Prayer	Torbryan

### Sunday 26<sup>th</sup> April - The Fourth Sunday of Easter

Time	Service	Location
09.00am	Holy Communion	Woodland
11.00am	Holy Communion	Ipplepen
5.00pm	Reflective/Taize Evening Worship	Broadhempston



## St Andrew's Church, Ipplepen

[www.missioncommunity.org.uk](http://www.missioncommunity.org.uk) 01803 814178

[office@beaconparishes.co.uk](mailto:office@beaconparishes.co.uk)

[www.facebook.com/StAndrewsIpplepen](http://www.facebook.com/StAndrewsIpplepen)



**Easter Day – 5<sup>th</sup> April – 11am.** During the service at **St. Andrew's, Ipplepen**, there will be children's Easter themed activities followed by an Easter egg hunt!



**Good Friday – 4<sup>th</sup> April 10am – 12 noon.** Easter Garden Walk: Children and family activities for Good Friday at **St. Mary's, Denbury**. Collect for and build the Easter Garden under the altar in the Church.



**Easter Day – 5<sup>th</sup> April – 11.30am** Join us at **St. Mary's, Denbury**, for an Easter bonnet + bowler parade and Easter egg hunt after the Easter Day service (**service starts at 10.30am**). Coffee and cake too!



**Easter Day – 5<sup>th</sup> April – 09.30am** During the Easter Day service at **St Peter and St Paul, Broadhempston** there will be a children's Easter craft table PLUS and Easter egg hunt after the service. Coffee and cake too!



### Special Occasions marked with floodlighting of the church tower

29<sup>th</sup> Mar – 4<sup>th</sup> Apr Remembered with love Iris and Peter Moore on your anniversary. The Moore family xx

In memory of Geoffrey Williamson, on the occasion of his birthday on 29<sup>th</sup> March. He is missed so much and with us always.

5<sup>th</sup> – 11<sup>th</sup> Apr Remembering Pamela on her birthday, 10<sup>th</sup> April. A loving wife and mother, sadly missed. Love - Mark, Karen and Ken Squire

12<sup>th</sup> – 18<sup>th</sup> Apr Dennis Hurrell and family in memory of his wife, Sally, whose birthday would have been on 14<sup>th</sup> April

Janice Julie & Adam remembering Daphne Partridge, dear Mum & Gran on her birthday on 15<sup>th</sup> April

For 16th April, in memory of my gorgeous husband Phil Heywood, from Anna

19<sup>th</sup> – 26<sup>th</sup> Apr Antony Mitchell remembering his mother Mary, and grandfather George Came

27<sup>th</sup> Apr – 3<sup>rd</sup> May In memory of Jim Clark on his birthday, 30th April, from Tony, Marilyn and family

### Holy Week

Sunday 29 <sup>th</sup> March	11.00am	Palm Sunday – dramatized reading of The Passion + Holy Communion	Woodland
Monday 30 <sup>th</sup> March	11.00am	Silent Prayer + Meditation	Broadhempston
Tuesday 31 <sup>st</sup> March	6.00pm	Stations of the Cross	Denbury
	10.30am	BCP Morning Prayer	Ipplepen
Wednesday 1 <sup>st</sup> April	11.00am	Holy Communion	Ipplepen
	10.30am	Morning Prayer	Denbury
Thursday 2 <sup>nd</sup> April	11.00am	Holy Communion	Denbury
	10.30am	Chrim Eucharist	Exeter Cathedral
	7.00pm	Holy Communion with Foot Washing followed by The Watch	Ipplepen
	9.00pm	The Watch	Denbury
Friday 3 <sup>rd</sup> April	10.30am	Walk of Witness through Ipplepen	Meet at Ipplepen Methodist Church
	12noon – 3.00pm	Sitting at the foot of the Cross	Broadhempston
Saturday 4 <sup>th</sup> April	8.00pm	Easter Vigil including blessing of the Easter Fire + Holy Communion	Denbury

Sponsor forms for the floodlighting are available in **St. Andrew's** and at:

[www.missioncommunity.org.uk/floodlighting](http://www.missioncommunity.org.uk/floodlighting)

Or email: [ippleflood@beaconparishes.co.uk](mailto:ippleflood@beaconparishes.co.uk)

# IPPLEPEN METHODIST CHURCH

## Preachers for April



<b>5<sup>th</sup></b>	<b>10.30</b>	<b>Rev Catherine Wagstaff</b>
		<b>Easter Communion</b>
	<b>5pm</b>	<b>Encounters - Informal, reflective worship looking at the death and resurrection of Jesus</b>
<b>12<sup>th</sup></b>	<b>9.15 for 9.30</b>	<b>Family Breakfast Church</b>
		<b>Informal church with children in mind – Sara Crouch</b>
<b>19<sup>th</sup></b>	<b>10.30</b>	<b>Local Arrangement</b>
<b>25<sup>th</sup></b>	<b>10.30</b>	<b>Rev J Richardson</b>
		<b>Communion Service</b>

**All are welcome to any of these services**

Local Lay Pastor: Miss Sara Crouch 07845 278253

Contact for Senior Steward: 01803 813110

Teignbridge Circuit Superintendent: Rev Kevin Hooke 07772 571647

Lettings Secretary: Mr Steve Major 07784 719514



# MALLANDS CARE

## “Professional Care with a personal touch”

Mallands is a friendly, caring family run residential care home providing high quality care with a personal touch.

We provide a range of services including

- Residential Care
- Respite Care
- Day Care
- Meals at home

**Contact us on**

**01626 366244**

**Email : [enquiries@mallands.co.uk](mailto:enquiries@mallands.co.uk)**

**[www.mallands.co.uk](http://www.mallands.co.uk)**

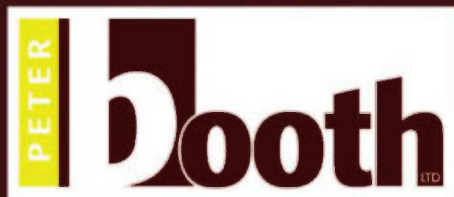


Our mission is to provide a safe and caring environment for residents, who can maintain their independence and a lifestyle that is as close to that as they might expect at home, with the peace of mind that there is always someone there for them to provide assistance when required.

**We offer day care to individuals to provide social interaction and to join in our activities. It also gives our visitors opportunity to use our services and facilities, such as chiropodist, hairdresser and our bathing facilities. We can provide transport for those in the local area.**

For people living locally, we can provide hot nutritious meals delivered to your home Monday-Friday. Individual dietary needs and preferences will be taken into account, with individuals having the opportunity to choose from the day's menu by 9:30am.

**Mallands Residential Care Home, Odle Hill, Abbotskerswell, TQ12 5NL**



We are a family firm now in its second generation that has been manufacturing and installing high quality kitchens & bedrooms for over 35 years.

**01626 333600**

**[www.booth-kitchens.co.uk](http://www.booth-kitchens.co.uk)**

Peter Booth Kitchens Ltd.  
The Old Cider Works, Manor Road, Abbotskerswell,  
Newton Abbot, Devon TQ12 5NF

# IPPLEPEN CONSERVATIVE CLUB

New members, non-members and affiliate members always welcome



**DARTS**

WEEKLY MEAT DRAW, QUIZ NIGHTS  
AND REGULAR ENTERTAINMENT

ALL MAJOR SPORTING EVENTS  
SHOWN ON OUR BIG SCREEN IN OUR  
FUNCTION ROOM & BAR

COMPETITIVE DRINKS PRICES

*We look forward to welcoming you soon!*



**POOL**



**SPORTS**



Monday - Thursday: 5pm - 11pm | Friday: 4pm - 11pm | Saturday: Noon - 11pm | Sunday: 1.30pm - 10.30pm



**FORE STREET • IPPLEPEN • 01803 812823**

## **IPPLEPEN WOMEN'S INSTITUTE REPORT FOR MARCH 2026**

Our monthly meeting this month was slightly different as it incorporated our AGM which had been brought forward a few months.

We were lucky enough to welcome Ernie Elsworth-Wilson who is the general manager for the South Devon Railway between Totnes and Buckfastleigh.

The original idea for the railway, came from Charles Dean in 1833. There was a rival scheme for a railway from Ashburton to Heathfield but that never happened. In 1864 the Buckfastleigh —Totnes line started with a 7ft broad gauge track( the standard gauge is 4ft) On May 1st 1872 the railway opened with a procession, band, tea, film, dancing and a bonfire with about 1000 people. Quite an occasion! In 1948 it was run by British Railways and it became a Heritage Railway in 1969 opened by Rt Hon Lord Beechingt.

The railway did run to Asburton in the 1950s and Tuckers Maltings in Ashburton was used. From 1969-71 the engines were kept at Ashburton. The coming on the A38 meant that the land had be used for that so the railway was no longer viable.

The present railway has used many old buildings from different parts of the country such as the water column at Buckfastleigh which came from Battersea Power station and the Totnes signal box which came from Birmingham.

The railway was originally used for carrying goods such as wool from Stsverton and the cider industry. The goods were mainly moved at night and it was hard to read the labels. Cows were transported too and staff had to be trained to milk the cows!

The railway was used in the filming of 'Beyond Paradise' for BBC1 and the station was converted to Shipton Abbot. They needed a tunnel so one had to be built which was done in two days. Many of the staff acted as extras. In 2025 the Royal Train brought King Charles, who was going to Dartmouth for the passing out parade. The train was hidden in a wooded place close by and the local newsagent had a shock when someone wanted a copy of all the daily papers early one morning, not knowing they were to be delivered to the king! A Pullman carriage from 1924 name Lydia is now an attraction at the station. This was used by Winston Churchill which fascinates people.

There is so much history and interest , too much for me to record. Perhaps your own visit might reveal more , either for a cream tea, breakfast , a meal for a special occasion or even a trip on the really popular Polar Express at Christmas which has really helped the local economy. (Ernie did say that people were really surprised to see people leaving their accommodation in their pyjamas to join the train)!

The railway is run as an educational charity and has has a positive impact on such groups as the Memory Cafe in Totnes. They have even put on an engine on a float to star at Ashburton Carnival. They also work closely with the Devon Wildlife Trust.

The rest of the meeting was for us to elect officers for the coming year. The present committee was elected en bloc but we did elect a new `president. Sadly Mary Parish, our current President is standing down. She has worked tirelessly for many years and has given us her all. She will be sadly missed but she will stay on the committee (thank goodness)! We thank her for all her hard work . We are fortunate to have anew president, Sally Bryson who will guide its safely forward.

Our next meeting is on 14th April when we have Michael Barber, a chocolatier as our speaker. Do join us at 2p.m.

Barbara Hersey-secretary

## What have we been up to at Ipplepen Primary School and Pre School?

Here is what we have been up over the last few weeks!

Over the past few weeks, Ipplepen Pre School have been busy discovering the wonderful world of sounds and stories. The children have especially enjoyed exploring the water tray, tuning into the noises they could hear as they splashed and poured. Together, we learned new descriptive words such as splash and splosh, and the children loved trying them out during play. We also had a fantastic time celebrating World Book Day! The children explored a range of exciting texts in playful and imaginative ways. One of the highlights was our Super worm tray, where the children dug through soil and materials to search for hidden worms-just like in the story! This hands-on activity sparked lots of excitement, curiosity and new vocabulary.

Chestnut Class have been on an exciting journey through the world of traditional tales over the last few weeks. The children have embraced every moment, diving into stories old and new and bringing them to life through play, discussion and creativity. One of our highlights has been stepping into the role of Goldilocks. The children imagined what it would feel like to be her, explored the choices she made, and thought carefully about how all the characters in the story might be feeling. Their empathy, ideas and storytelling voices have grown beautifully. Our outdoor learning has been just as magical. In the mud kitchen, the class have experimented with making their own muddy porridge, stirring, scooping and inventing their own versions of the tale. It has been a fantastic way to blend sensory play with story exploration.

In Rowan Class, we have been super busy! We have enjoyed learning all about Traditional Tales and we have been acting them out and using puppets to re tell them. We have loved The Three Billy Goats Gruff! We have also spent lots of time learning about length and height and getting the chance to measure and compare objects around our school. We took part in a live Farming lesson and we got to find out what all the buttons in a tractor do!

Cherry class have had a brilliant and busy few weeks. They have written persuasive letters about the effects of climate change and polar bears. They even got to send them to Blue Peter. They have been learning about Eyam, the plague village from 1666 and they had a go at re enacting the story of the villagers. They also took part in a Lego workshop where they had a challenge to build a vehicle that would be able to pull a bag of marbles across different surfaces.

Willow class have been very busy over the last few weeks. They have been learning about the Romans and even had a go at creating Roman catapults and seeing if they could fire a metre over one metre high. They have also been learning about capital cities. They have been using the chrome books to help them explore cities in Europe and what makes them popular.

In Acacia Class, they have been learning about the Great Western Railways and how they changed Newton Abbot. They have enjoyed finding out about the very first locomotives and researching some of the most significant trains in history.

It has been a busy and exciting few weeks for Sycamore Class, with lots of learning, trips and community events. In history, the children have been learning about the Ancient Maya, looking at their city-states, pyramids, calendars and glyphs and comparing them with Anglo-Saxon kingdoms. In science, we have been learning about the circulatory system and even made our own "blood" to help us understand the roles of red blood cells, white blood cells, platelets and plasma.

. We were also lucky to have a visit from Jay's Aim, who taught the children how to recognise an emergency, perform CPR and use a defibrillator. Our geography learning has focused on rivers, exploring how they change from their source to their mouth. The children also designed their own water filters in a fun filtration experiment to try to clean dirty water.

As a school some of our children travelled to Birmingham to take part in the Young Voices concert, performing alongside thousands of other children - an unforgettable experience. We also enjoyed a cricket workshop with Hollie and said a big thank you to Nick from Exeter Chiefs after our final rugby session with him. The children organised a fantastic table top sale, raising money for their chosen charities.

As we are a Rights Respecting School we have been focusing on Article 31. This links to World Book Day and making sure children have the right to relax, play and take part in a wide range of cultural and artistic activities.

Written by the School Council and Miss West

By the time the April magazine drops through letterboxes,

Unity in Sound's 10th anniversary concert at KEVICC will either just have taken place or will be about to take place.

. If you are reading this before 7.30pm on Friday 27th March, you might be just in time to grab tickets if there are any left!



Following the concert, the choir will be taking a well-earned break after a year packed with events to celebrate our first decade together, culminating in the big concert. We won't be resting on our laurels too long though. Rehearsals will resume on Thursday 23rd April, and we have exciting plans!

As we head into our next decade we are feeling Unstoppable! Who is up for joining us? Because the next song the choir will be learning is an in-house arrangement of Sia's 2016 hit 'Unstoppable', and we are extending an invitation to ladies who would like to join us to attend a four-week singing course focused on learning this arrangement.

When: Thursday 23rd April, Thursday 30th April, Thursday 7th May and Thursday 14th May, 7.15 for a 7.30pm start until 9.30pm.

Where: St Andrew's Church Hall, Paternoster Lane, Ipplepen.

Cost: £10 one-off non-member charge to cover all four weeks.

For more information: check out our social media pages or call 07754 949301.

# Birdsong and bluebell walk to Orley

Saturday 25<sup>th</sup> April 9am or 9.30am - 11.30am



Come join our IpplePlanet wildlife walk! With luck, we will see beautiful carpets of blooming bluebells, wild garlic, scattered cowslips and orchids amongst other wildflowers. By the end of the walk you should learn at least three bird songs, a great start to learning more about our feathered friends. The walk will be led by Mabel who has worked as an ecologist and has years of bird survey experience.

Either meet on the roadside by Ipplepen Village Hall at 9am so we can walk together to Orley Common; or meet at Orley Common car park at 9.30am. We aim to finish back in the village around 11.30am.

The footpath is mostly flat with gentle inclines, but there are some steep, rocky and uneven places. Please wear sensible footwear and clothing to suit the weather; trousers with boots or trainers recommended. Bring binoculars if you have them, but not necessary, just bring your ears! No booking necessary. **Free event, although donations to our IpplePlanet greening projects are very welcome.** Well behaved and supervised dogs and children are welcome too. The event will be cancelled if heavy rain and strong winds.

Please email [ippleplanet@hotmail.com](mailto:ippleplanet@hotmail.com) to find out more.

# Nick Courtier

## LOGS - TREE SURGERY

### THE SHED · IPPLEPEN

Mobile 07973 121152

Stuart Phipps

### The Chimney Sweep Company

- Chimney Sweeping/ Supply and install Wood burners and Multifuel Stoves
- Re-lining of Chimneys/ Fitting of Chimney Pots and Cows
- Sweeping Certificate issued/ £5M Liability Insurance
- Based in Ipplepen / HETAS Registered Installer
- HETAS Registered Installer



Contact: 01803814295 or 07729478999 Email: [enquiries@chimneysweepcompany.net](mailto:enquiries@chimneysweepcompany.net)

## Doug Bacchus

### Plumbing & Heating Services



All Types of domestic work undertaken  
Installation & Repairs

- Gas & Oil Installations
- Annual Gas Boiler Services
- Landlord Safety Certificates
- Power Flushing
- Boiler Repairs & Upgrades
- Solar Installations
- Bathroom Installations
- Underfloor Heating
- Unvented Cylinders
- Heating Upgrades

**VISSMANN**

Tel: 01803 813046

Mob: 07966290967

Email: [Dougbacchusplumbing@gmail.com](mailto:Dougbacchusplumbing@gmail.com)

HONEST & RELIABLE (Your locally based installer)

# IPPLEPEN PARISH COUNCIL

Report on Parish Council Meeting held on Tuesday 3rd March 2026 for a more detailed report please read the draft minutes (yet to be approved at our next meeting) on our website: [www.ipplepenparishcouncil.gov.uk](http://www.ipplepenparishcouncil.gov.uk)

## CORRESPONDENCE:

a) SWW have sent a letter informing the Parish Council that the direct debit for the water at the Recreation Ground toilets will increase from 1<sup>st</sup> April 2026 from £134.50 per month to £162.50 per month.

b) HMP Channings Wood have emailed about forthcoming construction activities. Commencing in mid-February, and continuing for an estimated duration of 12-16 weeks, essential works will be undertaken to the north of the existing prison facility, outside the secure perimeter. In order to carry out these works, there will be a requirement for one to two construction-related vehicle movements per day.

The project operates under an established Traffic Management Plan, which prescribes the approved delivery route from the prison's main entrance to 2 Mile Oak. In order to minimise any inconvenience to local residents, we have consulted with, and received agreement from, Devon County Council Highways on a temporary amendment to this route. Under the agreed arrangement, construction vehicles will travel to and from the work area, along Chercombe Bridge Road to the A383, thereby avoiding the more sensitive and congested residential areas within Denbury. These vehicles will be mostly rigid lorries and not the larger articulated lorries.

c) TDC have emailed about a new Playing Pitch Strategy covering football, cricket, rugby, hockey, tennis and bowls. As part of their study they are contacting clubs and facility owners to answer some questions and return to them by Monday 23<sup>rd</sup> March 2026.

## OUTSIDE BODIES

Coun.Mrs.Calland attended the Village Hall meeting and it appears there are suitable volunteers offering to take on the roles of Treasurer and Secretary and that they should be taking up these posts in March.

## AMENITIES: - Coun.Carnell

The Minutes of the Amenities meeting held on 10<sup>th</sup> February 2026, were approved and taken as read.

a) Bowling Club hedge – has now been cut.

b) Tree Planting – Coun.Palethorpe advised that he has allocated approx.12 trees to date for re-planting. Coun.Carnell confirmed that we have sufficient space at football club for further planting.

c) Park toilet decoration - Four quotations have been received and were discussed.

**RESOLUTION:** Coun.Rattlidge proposed to accept Tender C, Seconded by Coun. Palethorpe and agreed unanimously at £11,400. The successful contractor is Troy Mitchell Tiling.

d) Park toilet light - PIR work has been completed.

e) Weed spraying (Finalsan) – Coun.carnell has spoken to Grass Cutting Contractor

re not using glyphosate-based weedkillers and using alternative going forward that are safer for the environment. The use of Finalsan Herbicide has been recommended. It is the favoured option as it is Organic and Glyphosate Free. Finalsan is fully biodegradable in plants and in soil and is recommended to be a powerful contact herbicide for total control of moss, algae & common broad-leaved weeds.

f) Price/Quotes for new salt shed – Coun.Carnell advised that he has obtained a quotation for new salt storage shed as the existing shed is beyond economical repair and requires replacing. An application has been submitted for available grant funding to help offset some of the costs.

g) DAA have asked if the lights can be check for the night landing site **Action** – Coun.Carnell will do this.

h) The CCTV camera at the rear of the store room needs repositioning **Action** – Coun.Palethorpe.

**SKATE PARK** – Coun.Rattlidge

We are still waiting to hear from Parish Borrowing who are processing the application.

**KERSWELLA CARE** – Coun.Rattlidge

Medical Transport

We received 111 requests for transport to medical appointments across January and February.

- 25 requests came from Ipplepen residents.
- 10 requests came from out-lying villages, and we are seeing a steady increase in demand from these more remote areas.

We have also had a small number of requests for non-medical transport. Although we would love to help wherever possible, we must keep our service focused on essential medical journeys so that we are not mistaken for a taxi service — which, of course, we are not.

Trailblazers

Trailblazers continues to thrive, meeting on the second Wednesday of each month at 1.30pm in the Village Hall. We have around 15 regular attendees, with numbers rising for certain sessions. Because of this, we need to give priority on Wednesday trips to our regular group members.

Our programme varies each month:

- Some sessions feature visiting entertainers or speakers.
- Others include games, quizzes, and bingo.

It is a truly lovely group, and we look forward to these afternoons very much.

Upcoming sessions:

- March: Visit from the Bird of Prey Centre.
- April: Instead of meeting at the hall, we will be going out for lunch.

Grief Café

The Grief Café at The Hub currently has two regular attendees which works well. But Cathy, our facilitator, would warmly welcome more people, as sharing experiences of grief can be a great source of comfort and connection.

## **Digital Drop-In**

The Digital Drop-In at The Hub continues to thrive, offering valuable support to those who need help with phones, tablets, laptops, and online tasks. A big thank-you to Home Instead for facilitating this much-appreciated service.

### **157) APPROVE ASSET REGISTER**

Coun.Farrow asked if the current insurance value was correct for the Mill Centre, Football Club, and toilet blocks. Once this has been check and amended if necessary, all Councillors approved the Asset Register. (All unanimous)

### **158) DATE OF ANNUAL LITTER PICK**

The Annual Litter pick, confirmed by Coun.Palethorpe, is Saturday 25<sup>th</sup> April.

### **159) SUGGESTIONS FOR PARISH ASSEMBLY SPEAKER**

Coun.Mrs.Calland suggested Niall Tewson who is a young farmer or Ippepen Carnival Club. It was agreed to invite Ippepen Carnival Club to the Parish Assembly.

### **160) HIGHWAYS & RIGHTS OF WAY**

- a) Potholes on Maldon Road and Edgelands Lane.
- b) Dog fouling within the village – please pick up your dog mess.
- c) Speeding concerns - Members noted that the village remains subject to a **20mph speed limit**.
- d) New Bus shelter on A381 opposite Foredown Road - The Council discussed installation of a new bus shelter. Key points: Traffic management may be required during installation: A concrete base will be required **Action** – Coun. Smith to speak to Whiterose.
  - The timetable pole will eventually be relocated by Devon County Council. Further liaison with contractors will continue.

To note the date of the next PC meeting: **Tuesday 7<sup>th</sup> April 2026 at 7.15pm**

*The Parish Clerk*

## **Appendix A**

### **District Report - Cllr David Palethorpe**

#### **Community Infrastructure Levy (CIL) Fund**

At the February meeting of Teignbridge District Council, we approved a new Community Infrastructure Levy (CIL) Fund to support towns and parishes across the district.

CIL is money collected from developers when new building takes place. It must be used for infrastructure, but that does not just mean roads. It can also fund play areas, community buildings, sports facilities and other local amenities.

Under the new scheme:

- Parishes can apply for between £1,000 and £100,000
- Teignbridge will fund up to 50% of project costs
- The parish must contribute at least 50%
- There will be two funding rounds per year
- £200,000 per year has been set aside for four years

I'm pretty sure Ipplepen Parish Council will consider whether there are projects that could benefit from this opportunity.

### **Weather and Waste Collections**

Recent flooding across Teignbridge affected access to one of the waste transfer stations. As a result, some waste and recycling rounds were delayed because vehicles had to divert to another site.

From April there will also be changes to recycling arrangements following Government legislation. An additional recycling bag, similar to the current paper bag, will be introduced. Further details will be circulated in due course.

### **Devon County Council Budget – Roads**

Many residents have contacted me about the poor condition of roads and lanes around the village. I share those concerns and have raised them with colleagues at Devon County Council. Devon has confirmed:

- Highways maintenance spending will increase to £32.4 million in 2026/27
- An additional £4 million has been agreed for road maintenance next year
- Funding will support road repairs, drainage improvements and clearing gullies
- Over five years, £546 million will be invested in highways, including extra funding for preventative maintenance

While this is welcome, residents are understandably frustrated by the state of local roads. I will continue to press for improvements affecting Ipplepen.

### **Planning and Planning Enforcement**

Planning matters remain one of the most common issues raised with me.

There is understandable frustration when residents see planning rules being ignored. It is unfair on those who follow the correct process, often at significant cost, to see others flagrantly bypassing the rules.

As part of my additional responsibilities at Teignbridge we have now:

- Added additional resources to planning enforcement
- Restructured the enforcement team
- Prioritised speeding up action on clear breaches

However, national legislation requires retrospective planning applications to be considered as though they are new applications. This can make enforcement feel slow and frustrating, even when action is being taken.

I remain committed to ensuring enforcement is robust and fair.

### **Local Government Reorganisation (LGR)**

The Government is progressing plans to replace the current county and district council system with new unitary authorities from April 2028.

A Government consultation is currently underway. I would encourage residents, businesses and councils to take part, as this will shape how services are delivered for many years to come.

Details of all five proposals and links to the UK Government's consultation can be found at [www.devonlgr.co.uk](http://www.devonlgr.co.uk) or by heading directly to the [consultation page on GOV.UK](#).

David Palethorpe Teignbridge District Council – Councillor for the Ipplepen Ward  
Contact [david.palethorpe@teignbridge.gov.uk](mailto:david.palethorpe@teignbridge.gov.uk) Mob 07506422686

## **Ipplepen Parish Report – March 2026**

### **Councillor Heather Horner**

At the end of February, Devon County Council agreed its budget for 2026/27—decisions that will directly influence the services and support available to Ipplepen over the coming year. Several areas of investment stand out as particularly important for our parish, especially highways, children’s services, and the continuation of councillor locality budgets.

This year’s budget places a strong emphasis on improving Devon’s road network. Highways spending will rise to £32.4 million, with an extra £4 million specifically allocated to road repairs, drainage, and clearing gullies. Over the next five years, the council plans to invest more than half a billion pounds—£546 million—in highways, including a major commitment to preventative maintenance.

For Ipplepen, this should translate into noticeable improvements. Our rural lanes, many of which have been waiting some time for attention, are likely to benefit from better surface quality and more reliable upkeep. Important connecting routes such as the A381, Orley Road, Conniford Lane, and the approaches toward Broadhempston should see enhanced drainage and more frequent gully clearance—particularly valuable in areas prone to standing water and winter flooding. With additional funding and more flexibility for Neighbourhood Highways Officers, parish-level reporting will carry greater weight, making it easier for our concerns to be acted upon.

The council also confirmed significant investment in children’s services and SEND support. Spending in this department has risen to £268 million—a £19.1 million uplift—reflecting the growing needs of children and families across the county. Alongside this, the council has committed £76.5 million in capital investment over five years. This will contribute to creating new specialist school places, expanding existing provision, improving children’s homes, and strengthening SEND support across Devon.

Although no site-specific announcements were made for Ipplepen, the scale of this investment should have clear benefits for local families. Demand for SEND support continues to grow, and these measures are expected to reduce travel distances for specialist education, expand support in nearby mainstream schools, and strengthen early-help services for families experiencing difficulties. Over time, this should ease pressure on local schools and improve inclusion for pupils with additional needs.

Despite the financial challenges facing the council—requiring nearly £39 million in savings or new income streams—locality budgets for councillors remain protected. These small but important funds help support projects in villages like ours, from improvements to community buildings and safety initiatives to minor highways enhancements, footpath works, and local resilience efforts. However, given the tight budget environment, applications that show clear community benefit or include match-funding are likely to be prioritised.

Finally, councillors approved a 4.99% increase in council tax, equivalent to around £89.91 a year for a Band D property. For Ipplepen residents, this means a modest rise in household bills but continued protection for essential services, particularly highways and children’s provision. Overall, the budget provides a more stable financial base for the support and improvements that matter to our parish.



# MANOR

Self Storage | Business Park

Storage For Everyone

**Manor Business Park**

Drive up storage

Warehousing

Workshops

Office rentals

*Home to over 20 local businesses*



[www.manorselfstorage.co.uk](http://www.manorselfstorage.co.uk) | Tele: 01803 812570

Dainton Manor Business Park, Dainton, TQ12 5TZ

- Overgrown Garden Clearance

- Hedge Cutting

- General Garden Maintenance

- Fencing

## SUPER SCAPES

*Garden Maintenance and Fencing*

*Friendly & Reliable, Based in Ogwell.*

Tom Wotton 07969 757 727 [info@superscapes.co.uk](mailto:info@superscapes.co.uk)



## OUR MONTHLY WEATHER FEBRUARY

<b>Year</b>	<b>2026</b>	2025	2024	2023	2022	2021
Highest temp., °C	<b>14.4</b>	13.9	14.5	13.6	13.6	14.6
Lowest temp., °C	<b>-0.1</b>	-1.8	-1.2	-4.6	-1.2	-2.4
Average max. temp °C	<b>10.8</b>	9.0	11.6	10.2	11.2	9.3
Average min. Temp. °C	<b>5.5</b>	4.2	5.5	2.2	4.0	3.6
Total rainfall, mm	<b>197.0</b>	110.0	211.4	7.0	100.8	102.8
Number of dry days	<b>3</b>	13	10	24	7	10

**General Comments:** Well, by recent standards, that was quite an unusual month – no named storms came our way! That did not mean that we did not have any weather, though, there was plenty of that! No records were broken although a few were threatened. There was plenty of rain and wind to go around!

Our maximum temperature was relatively high and comfortably into the upper sextile of our data but it has been exceeded five times in the past 40 years and is 1.2C° above the average. The minimum temperature was also on the high side; there are just four higher minima since 1987 putting this into the upper decile of our data, it being 2.3C° warmer than the average. Maximum temperatures in double figures were quite common (there were 20 of them) whilst the highest minimum was a fairly impressive 10.2°C. This produced an average maximum temperature for the month which is firmly in the upper sextile of our database, 1.55C° above the mean. Only five times has it been exceeded. The average minimum temperature, though, was just within the upper decile, 2.2C° above the mean. Together these lead to an average temperature for the month of 8.15°C which is fully 1.9C° above the long term mean. There was just one day upon which the temperature dropped to zero or below; this is well below the long term expectation of nine or ten.

The normal monthly rainfall for February is 102.2 mm so this month's total is almost 93% above the average for the month. Rain fell very much continuously. There were seven days upon which the daily rainfall exceeded 10 mm, two of which exceeded 20 mm. All in all that produced only three dry days, which is well below the long term average for the month of twelve or thirteen. Only once in forty years have we had fewer dry days.

February is usually one of our windiest months; not quite so this year. With a wind run of 2275 miles, it was well below the February average in our, albeit short, record of this parameter. Our highest gust speed was just below 35 mph (Near Gale, Force 7) from the east-north-east. The wind direction was mainly westerly or south-westerly for much of the month although we had a few days of easterlies early in the month.

The average barometric pressure for the month was a lowish 1001 mb with a range from a high of 1022 mb to a deepish low of 975 mb. There were no abrupt fluctuations.

It would have been mild enough and calm enough to get out and about but it would have been difficult to stay dry!

**Winter Summary:** This Winter, very wet in December, even wetter in January and very wet again in February, brought the second highest Winter rainfall we have recorded – 688.4 mm – only the Winter of 2013/2014 was wetter. However, temperatures generally could be described as ‘mild’ but interspersed with some colder days, especially in January. Some of those cold days were bitter. The sun put in several appearances, though, and the weather then became quite balmy.

We experienced thirteen days with temperatures at, or below, freezing – quite a lot less than our forty year average of about twenty two. Some hail came in January together with a smattering of snow (if you had blinked, you would have missed it!). The average maximum temperature was 9.9°C which is well above the mean of 9.1°C whilst the average minimum temperature of 3.9°C was above but only by 0.35°C. Together these gave us an average Winter temperature of 6.9°C, 0.6°C above the mean.

At 688.4 mm, the rainfall was about 87% above our typical allowance of 368.8 mm and has only been exceeded once since 1987. We had just 18 dry days against an expectation of 38 or 39. Only the Winters of 2013/2014 and 2015/2016 had fewer.

We had a succession of named storms in December and January which brought widespread disruption although Ipplepen avoided the worst of their wrath. They brought high winds during December and January but these were generally light to moderate during February with few gusts reaching 30 mph.

**Martin Stentiford**

PACK IT, BOX IT AND WE WILL STORE IT

CLEAN • SAFE • SECURE



Secure Container Storage • Internal Storage Units • Long & Short Term Storage • Unlimited Daytime Access  
CCTV • Packing Materials & Boxes • Archive Storage

## Westcountry Self Storage

01803 813943  
07850 317304

On the Main Road A381  
Newton Abbot to Totnes Road  
Totnes Road, Ipplepen, Newton Abbot  
Devon TQ12 5TN

[www.westcountryselfstorage.co.uk](http://www.westcountryselfstorage.co.uk)

\* All prices subject to VAT



# QUAY SCAFFOLDING

For all your scaffolding requirements  
from complete design scaffolds  
to basic access scaffolding.

**For a free quotation and friendly advice, please call**



**TOM ALLEN**  
**07980 632604**



Ipplepen based

**Squirrels..** We've been super busy and managed to squeeze a lot into an hour a week! Like the other sections did we had a Winter Olympics evening complete with an opening ceremony with our version of a child friendly Olympic flame! The Squirrels had a go at curling, teddy bobsled and the fake snowballs made an appearance too. Carrying on with the ice theme we had an evening thinking about polar bears and learnt lots of interesting facts about them and made some brilliant pictures to take home. Most recently the Squirrels became scientists and had a fun packed evening watching raisins dance, making play dough to take home and very impressively making our own butter!

**Beavers. .** The Beavers had a visit from a teacher from the Karate Academy as one of the colony goes there regularly.. Him and the Beaver came in their Karate kit. He gave the children a warmup session and then showed them some of the moves. It was quite interesting to see and learn from the master. We all thoroughly enjoyed the evening. We did our own version of the winter Olympics with snowball throwing, curling and a few more adventurous games. This was followed by Chinese New year and badge night where the Beavers show what badge work they have done themselves.

**Cubs..** The return after the half term break coincided with Chinese New Year so we made lanterns and dragon puppets. Since then We've had a badgework evening which saw some of the Cubs presenting the work they had done at home towards activity badges including Hobbies, Collector, Physical Recreation, Book Reader and Photography. There were also some swimming certificates to be matched to the relevant Staged Swimmer badges. We did some catchup work towards a couple of the Challenge badges. In the week leading to Mother's Day our Cubs produced some lovely paper flowers and amazing vibrant cards to take home.

**Scouts.** Friday Scouts made the most of being inside during the inclement weather. We hosted the Great Ipplepen Winter Olympics and took part in all manner of winter themed activities including an indoor nerf gun triathlon, curling and skateboard and string luge!! We've had a session of rifle shooting with expert guidance and tuition from Tom, one of our leaders who holds more permits for activities than anyone I know, thanks Tom. We've also been busy working towards our DIY and Skills badges and have made bird boxes, lots of concentration and focus and very successful builds all round. We've helped to tidy up the streets of Ipplepen with a litter pick and found an interesting variety of items!

**Pioneers.** We've continued to work towards our artist badges. Hopefully lots will have achieved this by the time you read this article. Unfortunately the rain was very heavy on the evening that was planned for wide games, however, we are Scouts and rain didn't stop us. In full wet weather gear we played lots of different games in the park in the rain. Lots of laughter, shouting and animal noises. Great fun. (We must be mad!). In total contrast we had a brilliant evening at the Torquay 10 pin bowling alley. Everyone did well, but it was one of our Leaders, Rich who was the supreme champion. Well done. We've a first for us coming up (it will be over at the time you read this) in the form of a murder mystery evening. Could be interesting as Judith who is planning it has never actually been to one! Let's see how it goes. At Easter, three of our Pioneers are moving on to Explorers, hopefully having achieved their Chief Scouts Gold Award (at time of writing there are a couple of clauses left to do). Assuming they complete it, congratulations to Emily, Martha and Isabel.



Local Honey,  
Beeswax candles and  
Beeswax hand lotion.

Call Kathy 07925 115709

## BIRBECK LANDSCAPES

Jaynes Free Range eggs

Free quotes-Hedge cutting.

Locally Farmed

Lawns cut. Fencing. Turfing

Free Delivery Ipplepen Mag area

Rubbish can be removed

**Contact Simon or Jayne 07855 435237**



## Knowle Tree Services

Your Local Tree Specialist

ALL aspects of tree care since 2006

Domestic and Commercial Tree Work  
Hedge Cutting and Removal  
Qualified and Highly Skilled Team  
Planning Applications  
Help with TPO's  
£5m public liability insurance  
FREE consultation and NO obligation  
quotations

### LOGS

Dried Logs always available for delivery

Tel. 07803 441759

Tel. 07711 828184

[enquiries@knowletreeservices.co.uk](mailto:enquiries@knowletreeservices.co.uk)

[www.knowletreeservices.co.uk](http://www.knowletreeservices.co.uk)



## Handy Bob



Any odd job that needs doing,

Lawns, Small hedges, Borders, Painting etc.

Just phone to find out more on: **01803 812723**

# BOWLING CLUB WHIST DRIVE

Thursday afternoon, 12<sup>th</sup> March, saw a very busy time, as despite the dreadful wind and rain, 32 people attended the Whist Drive. It was good to welcome back Jasmine and John Osmond and Trevor Moore as it proved they all must have enjoyed their first Whist Drive in February and had returned to be with us again. It was also lovely to see Cath Spiers back with us following her recent illness and Margaret Bartlett following her recent knee operation.

This time we welcomed lots of new people for the first time, Ann and Margaret Jones, Barry and Les Quick, Geoff Mant, John Southcombe, Barbara Dodd, Derek Hext, John Foster, Innes Jordan, Rosemary Wrayford, Des "Patch" and Stafford Medland. We trust they all had a good time and will look forward to seeing them again.

My thanks go to everyone who supports the Whist Drive and for the generosity of the players who bring in prizes for the raffle, which is greatly appreciated. Thanks to Rachael Lankshear who posts the Whist date reminder on Facebook and Spotted Ipplepen. I would also like to add my thanks this month to Joan Preston, who as always does a great job in the kitchen, so we can all enjoy the half time refreshments, and also to Trevor Moore who helped me with the setting up of the tables this month. Again, as always, big thanks to everyone who help at the end of each Whist Drive with packing the tables and equipment away, leaving the Clubhouse clean and tidy.

The winners this month were as follows: Ladies – 1<sup>st</sup> myself (Shirley Northwood), 2<sup>nd</sup> Joan Preston and 3<sup>rd</sup> Liz Robson. The booby prize was awarded to Olly Winter.

Gents (or those playing in a gents role) – 1<sup>st</sup> Keith Dommett, 2<sup>nd</sup> Geoff Mant and 3<sup>rd</sup> Des "Patch". The booby prize was awarded to Rosemary Wrayford.

Whist Drives are always held on the second Thursday of every month at the Clubhouse, and so a date for your diary of the next Whist is **Thursday 9<sup>th</sup> April starting at 1.30pm**

In the meantime – here's wishing you all a very HAPPY EASTER.

Shirley Northwood 07711 016495



# A.J. GIBBONS FUEL MERCHANT

– 01626 834449 –

SOLID SMOKELESS FUELS

BOTTLED GAS

KINDLING - KILNED DRY LOGS

CHIMNEY SWEEPING

*Our kiln dried logs are locally sourced and  
kilned in-house, providing a cleaner and*

*more efficient burn*

**Prompt delivery on all fuels**



Unit 2, Blue Waters Ind Est., Pottery Road,  
Bovey Tracey. TQ13 9YF

# A.S. MOTORS

(DEVON) LTD



- MOTs
- SERVICING
- WELDING
- BREAKDOWN & RECOVERY
- CARS AND COMMERCIAL
- ALL MAKES OF VEHICLES

Unit 8, Ruby Farm,  
Abbotskerswell, Newton Abbot  
TQ12 5NQ

07525 394937

We run a pickup and collection service

# Walking for Combat Stress on 14 th March 2026

5 of us walked the 5 churches walk starting at St Andrew's, Ipplepen, to Torbryan, Broadhempston, Woodland and Denbury and back to Ipplepen.

We took 5 hours to do 12.5 miles.

We would like to thank all of you that donated so generously giving a total of £650.

## Who Combat Stress help

Combat Stress is the UK's leading charity for veterans' mental health. For over a century they've been helping former servicemen and women deal with issues like post-traumatic stress disorder (PTSD), anxiety and depression. Today they provide specialist treatment and support for veterans from every service and conflict focusing on those with complex mental health issues.

Nationally the total raised to date for this walk is £360,000

Thank you once again

Pam and Robin Thomas

---

## DONATION OF TRACTOR AND TRAILER FOR TODDLER PLAY AREA

“Chis Burley the Owner of Outdoor Play UK very kindly donated to Ipplepen Parish Council a Tractor and Trailer for the toddler play area at the playing field.”



“Thank you very much Chris, it is a great gesture to the residents of Ipplepen.



**Our friendly community shop  
has been run by volunteers for 16 years!**

**Everyday items**

**Gifts and cards**

**Coffee shop with homemade cakes**

**Hot and cold savoury snacks**

**Post Office services**

**We are open:**

**Shop: Mon - Fri 8.30am to 6pm. Sat 9am to 1pm. 01803 813347**

**Post Office: Mon - Fri 9am to 1pm Sat 9am to 12pm 01803 814335**

**[www.broadhempstonshop.co.uk](http://www.broadhempstonshop.co.uk)**

**[broadcomshop@gmail.com](mailto:broadcomshop@gmail.com)**